

2020
CATALOG
#1 American Made
Fence Supplier



Hinges, Latches,
and Drop Rods



SALES POLICY

Terms and Conditions

New customers will be required to prepay- Mastercard, Visa, Discover or C.O.D., until credit is established. All companies establishing a line of credit will be requested to furnish credit references and financial information.

Established accounts purchasing standard design and sizes will be given terms of 2%10, Net 30 days. For colored PVC orders add 15%. A minimum charge of \$35.00 per purchase is in effect. Orders subject to a MINIMUM ORDER CHARGE will be calculated before freight and after applicable discount is taken.

Contact

West Coast Sales

775-331-3331
Fax: 775-331-3338

East Coast and Midwest Sales

262-642-9123
Fax: 262-642-9104

Canada

888-749-7133
Fax: 613-543-3975

Check us out on the web: www.mfftence.com
Order Online at: www.mfftence.com

****Prices are subject to
Change without notice****

Hinges

Table of Contents

1" Ornamental Embassy Iron Hinges	5
1 1/2 " x 2 1/2 " Hinges	6
2" Ornamental Embassy Iron Hinges	6-7
3" Residential and Wall Mount Hinges	7-8
3 1/2" Residential and Wall Mount Hinges	8-10
4" Commercial and Wall Mount Hinges	11
Horse Head Hinges	12
Steel Frame Gate Hinges	12
Wrap Around Hinges	12-14
Strap & "T" Hinges	14-15
SS Wood Hinges	16
Wall Mount Dallas Hinges	16
Commercial Duty Embassy Hinges	17
Industrial Duty Embassy Hinges	17
Clamp-On Embassy Hinges	18
Galvanized Chain Link Hinges	19
Round Post to Sq. Gate Frame Hinges	19-20
Ranch Style Agricultural Hinges	20
Springs for Hinges	20

Modern Fence Technologies

2631 Corporate Circle
East Troy, WI 53120
262-642-9123
Fax 262-642-9104

Sales Contacts

US Sales - 262-642-9123
US West Coast Sales - 775-331-3331
Canada Sales - 888-749-7133
International - 888-456-6786

Websites

www.mfffence.com
www.facebook.com/mftwi
www.twitter.com/mfffence

LATCHES AND DROP RODS

Table of Contents

Residential Latches	21
Gravity Latches	21-22
Small Dual Latch	22
Lockable Economy Latches	22
Dual Lockable Economy Latches	23
Heavy Duty Commercial Embassy Latch	23
Charleston Latches	24
Gate Latch for Walk and Double Gates	24-25
Slide Bolt Latches	25-26
Safety Horse Latches	26-27
Double Drive Gate Bar Latches	27-28
Yutka Latch	28
Gate Handles	28-29
Residential and Commercial Drop Rods.....	29-30
Embassy Drop Rods	30
S.S. Drop Rods (Non-Painted)	31
Gate Stops	31-32
GateMaster Locks	32-35

Modern Fence Technologies

2631 Corporate Circle
East Troy, WI 53120
262-642-9123
Fax 262-642-9104

Sales Contacts

US Sales - 262-642-9123
US West Coast Sales - 775-331-3331
Canada Sales - 888-749-7133
International - 888-456-6786

Websites

www.mfffence.com
www.facebook.com/mftwi
www.twitter.com/mfffence

Hinges

Prices may change without notice.

1" MS Ornamental Embassy Iron Hinge

Part No. KMS-1OI-H-B

Qty per Case: 18 Sets, 2 Per Set

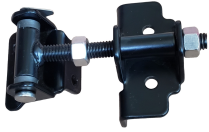
Weight: 28 LBS per Case

Made Of: Mild Steel

Finish: Black

Size: 1"

Gate Weight Chart: Chart "A"



\$24.61 each set for 26 - 50 cases
\$25.91 each set for 10 - 25 cases
\$27.27 each set for 1 - 9 cases
\$33.60 Broken Case Price

This hinge is designed for 1" or larger steel frame gates, and the post can be 1" or larger. The post and gate brackets are Mild steel all the other parts are stainless steel. Shipped with self drilling screws. Hinges are made with bearings and a removable clevis pin. Swings 180 degrees. Each set comes with 2 hinges to hang a gate.

1" Ornamental Embassy Iron Hinge w/ Springs

Part No. KMS-1OIH-B-WS

Qty per Case: 18 Sets, 2 Per Set

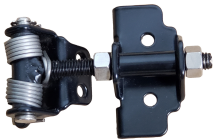
Weight: 28 LBS per Case

Made Of: Mild Steel

Finish: Black

Size: 1"

Gate Weight Chart: Chart "A"



\$26.04 each set for 26 - 50 cases
\$27.41 each set for 10 - 25 cases
\$28.86 each set for 1 - 9 cases
\$35.55 Broken Case Price

This hinge is designed for 1" or larger steel frame gates, and the post can be 1" or larger. The post and gate brackets are Mild steel all the other parts are stainless steel. Shipped with self drilling screws. Hinges are made with bearings and a removable clevis pin. Swings 180 degrees. Comes with springs on each hinge for fast and easy closing of the gate. Each set comes with 2 hinges to hang a gate.

1" SS Ornamental Embassy Iron Hinge

Part No. KSS-1OIH

Qty per Case: 18 Sets, 2 Per Set

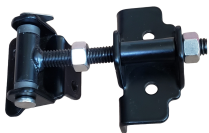
Weight: 24 LBS per Case

Made Of: Stainless Steel

Finish: Black, White

Size: 1"

Gate Weight Chart: Chart "A"



\$25.56 each set for 26 - 50 cases
\$26.90 each set for 10 - 25 cases
\$28.32 each set for 1 - 9 cases
\$34.89 Broken Case Price

100% Stainless Steel. Designed for 1" and larger steel frame gates. Post can be 1 1/2" or larger. Hinges made with bearings and removable clevis pin. Swings 180 degrees.

1" SS Ornamental Embassy Iron Hinge w/ Springs

Part No. KSS-1OIHBS

Qty per Case: 18 Sets, 2 Per Set

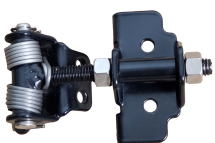
Weight: 24 LBS per Case

Made Of: Stainless Steel

Finish: Black, White

Size: 1"

Gate Weight Chart: Chart "A"



\$26.99 each set for 26 - 50 cases
\$28.41 each set for 10 - 25 cases
\$29.90 each set for 1 - 9 cases
\$36.84 Broken Case Price

100% Stainless Steel. This hinge is designed for 1" or larger steel frame gates, and the post can be 1" or larger. Shipped with self drilling screws. Hinges are made with bearings and a removable clevis pin. Swings 180 degrees. Comes with springs on each hinge for fast and easy closing of the gate.

Hinges



Prices may change without notice.

1 1/2" x 2 1/2" SS Residential Hinge

Part No. KSS-15X25H

Qty per Case: 18 Sets, 2 Per Set

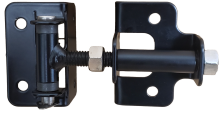
Weight: 25 LBS per Case

Made Of: Stainless Steel

Finish: Black, White

Size: 1 1/2" post, 2 1/2" gate

Gate Weight Chart: Chart "A"



\$22.07 each set for 26 - 50 cases
\$23.23 each set for 10 - 25 cases
\$24.46 each set for 1 - 9 cases
\$30.13 Broken Case Price

100% Stainless Steel. Designed for 1 1/2" or larger steel frame gates. Post can be any size 1 3/4" or larger. Shipped with stainless steel pan head screws for mounting. Hinges made with bearings and a removable clevis pin. Swings 180 degrees.

1 1/2" x 2 1/2" SS Residential Hinge with Springs

Part No. KSS-15X25HWS

Qty per Case: 18 Sets, 2 Per Set

Weight: 25 LBS per Case

Made Of: Stainless Steel

Finish: Black, White

Size: 1 1/2" post, 2 1/2" gate

Gate Weight Chart: Chart "A"



\$23.50 each set for 26 - 50 cases
\$24.74 each set for 10 - 25 cases
\$26.04 each set for 1 - 9 cases
\$32.08 Broken Case Price

100% Stainless Steel. Designed for 1 1/2" and larger steel frame gates. Post can be any size 1 3/4" or larger. Shipped with SS screws. Hinges are made with bearings and a removable clevis pin. Swings 180 degrees. Comes with springs on each hinge for fast and easy closing of the gate.

2" Ornamental Embassy Iron Hinge

Part No. KMS-20IH-B

Qty per Case: 12 Sets, 2 Per Set

Weight: 25 LBS per Case

Made Of: Mild Steel

Finish: Black

Size: 2" post side, 1 1/2" gate side

Gate Weight Chart: Chart "B"



\$35.04 each set for 26 - 50 cases
\$36.89 each set for 10 - 25 cases
\$38.83 each set for 1 - 9 cases
\$47.83 Broken Case Price

Designed for 1 1/2" and larger steel frame gates. Post can be any size 2" or larger. The post and gate brackets are made of Mild steel while all other parts are stainless steel. Shipped with hex head screws for mounting. Hinges are made with bearings and a removable clevis pin. Swings 180 degrees. Patent #727

-133

2" Ornamental Embassy Iron Hinge w/ Springs

Part No. KMS-20IH-B-WS

Qty per Case: 12 Sets, 2 Per Set

Weight: 25 LBS per Case

Made Of: Mild Steel

Finish: Black

Size: 2" post side, 1 1/2" gate side

Gate Weight Chart: Chart "B"



\$36.46 each set for 26 - 50 cases
\$38.38 each set for 10 - 25 cases
\$40.40 each set for 1 - 9 cases
\$49.76 Broken Case Price

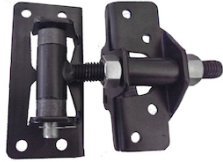
Designed for 1 1/2" and larger steel frame gates. Post can be any size 2" or larger. Hinges are stainless steel and made with bearings and a removable clevis pin. Swings 180 degrees.

Patent #727-133 In black powder coat finish. Passivated stainless steel springs.

Hinges

Prices may change without notice.

2" SS Ornamental Embassy Iron Hinge



Part No. KSS-20IH

Qty per Case: 8 Sets, 2 Per Set

Weight: 25 LBS per Case

Made Of: Stainless Steel

Finish: Black, White

Size: 2" post side, 1 1/2" gate side

Gate Weight Chart: Chart "B"

\$39.54 each set for 26 - 50 cases
\$41.62 each set for 10 - 25 cases
\$43.81 each set for 1 - 9 cases
\$53.98 Broken Case Price

100% Stainless Steel. Designed for 1 1/2" and larger steel frame gates. Post can be any size 2" or larger. Swings 180 degrees.

Patent #727-133

2" SS Ornamental Embassy Iron Hinge w/ Springs



Part No. KSS-20IH-WS

Qty per Case: 8 Sets, 2 Per Set

Weight: 25 LBS per Case

Made Of: Stainless Steel

Finish: Black, White

Size: 2" post side, 1 1/2" gate side

Gate Weight Chart: Chart "B"

\$40.96 each set for 26 - 50 cases
\$43.11 each set for 10 - 25 cases
\$45.38 each set for 1 - 9 cases
\$55.91 Broken Case Price

Designed for 1 1/2" and larger steel frame gates. Post can be any size 2" or larger. Patent #727-133 Stainless Steel brackets. In black powder coat finish. Passivated stainless steel springs.

3" Residential Hinge



Part No. KMS-3X3HS

Qty per Case: 12 Sets, 2 Per Set

Weight: 27 LBS per Case

Made Of: Mild Steel

Finish: Black

Size: 3"

Gate Weight Chart: Chart "A"

\$20.49 each set for 26 - 50 cases
\$21.56 each set for 10 - 25 cases
\$22.70 each set for 1 - 9 cases
\$27.96 Broken Case Price

Designed for 3" and larger gate frames. Post can be any size 3" or larger. The post and gate brackets are Mild steel. Swings 180 degrees.

3" Residential Hinge with Springs



Part No. KMS-3X3HSWS

Qty per Case: 12 Sets, 2 Per Set

Weight: 27 LBS per Case

Made Of: Mild Steel

Finish: Black

Size: 3"

Gate Weight Chart: Chart "A"

\$22.26 each set for 26 - 50 cases
\$23.43 each set for 10 - 25 cases
\$24.66 each set for 1 - 9 cases
\$30.38 Broken Case Price

Designed for 3" and larger gate frames. The post and brackets are made of mild steel, and come with springs for quicker closing. Shipped with screws. Hinges made with bearings and a removable clevis pin. Swings 180 degrees.

Hinges



Prices may change without notice.

3" SS Residential Hinge



Part No. KSS-3X3HS

Qty per Case: 12 Sets, 2 Per Set

Weight: 26 LBS per Case

Made Of: Stainless Steel

Finish: Black, White

Size: 3"

Gate Weight Chart: Chart "A"

\$22.86 each set for 26 - 50 cases

\$24.06 each set for 10 - 25 cases

\$25.33 each set for 1 - 9 cases

\$31.20 Broken Case Price

100% Stainless Steel. Designed for 3" and larger gate frames. Post can be any size 3" or larger. Swings 180 degrees.

3" SS Residential Hinge with Springs



Part No. KSS-3X3HSWS

Qty per Case: 12 Sets, 2 Per Set

Weight: 26 LBS per Case

Made Of: Stainless Steel

Finish: Black, White

Size: 3"

Gate Weight Chart: Chart "A"

\$24.29 each set for 26 - 50 cases

\$25.56 each set for 10 - 25 cases

\$26.91 each set for 1 - 9 cases

\$33.15 Broken Case Price

100% Stainless Steel. Designed for 3" and larger gate frames. Post can be 3" or larger. Shipped screws. Hinges come with springs for quicker closing and made with bearings and a removable clevis pin. Swings 180 degrees.

3" SS Residential Hinge Wall Mount



Part No. KSS-3X3WFH

Qty per Case: 12 Sets, 2 Per Set

Weight: 24 LBS per Case

Made Of: Stainless Steel

Finish: Black, White

Size: 3"

Gate Weight Chart: Chart "A"

\$25.74 each set for 26 - 50 cases

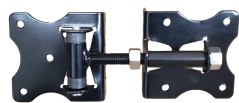
\$27.10 each set for 10 - 25 cases

\$28.52 each set for 1 - 9 cases

\$35.14 Broken Case Price

100% Stainless Steel. Designed for 3" and larger gate frames. Post can be 3" or larger. Swings 180 degrees.

3^{1/2}" Residential Hinge



Part No. KMS-35X35HS

Qty per Case: 8 Sets, 2 Per Set

Weight: 28 LBS per Case

Made Of: Mild Steel

Finish: Black

Size: 3 1/2" x 1 3/8"

Gate Weight Chart: Chart "A"

\$26.29 each set for 26 - 50 cases

\$27.67 each set for 10 - 25 cases

\$29.13 each set for 1 - 9 cases

\$35.88 Broken Case Price

Designed for 3 1/2" and larger gate frames. Post can be any size 3 1/2" or larger. The post and gate brackets are mild steel. Swings 180 degrees.

Hinges

Prices may change without notice.

3^{1/2}" Residential Hinge with Springs

Part No. KMS-35X35HSWS

Qty per Case: 8 Sets, 2 Per Set

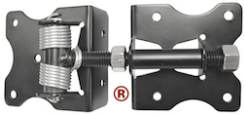
Weight: 28 LBS per Case

Made Of: Mild Steel

Finish: Black

Size: 3 1/2" x 1 3/8"

Gate Weight Chart: Chart "B"



\$29.04 each set for 26 - 50 cases
\$30.57 each set for 10 - 25 cases
\$32.18 each set for 1 - 9 cases
\$39.64 Broken Case Price

Designed for 3 1/2" and larger gate frames. Post can be any size 3 1/2" or larger. The post and gate brackets are mild steel and come with springs for quicker closing.

3^{1/2}" SS Residential Hinge

Part No. KSS-35X35HS

Qty per Case: 8 Sets, 2 Per Set

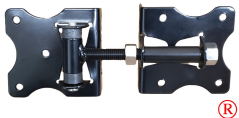
Weight: 24 LBS per Case

Made Of: Stainless Steel

Finish: Black, White

Size: 3 1/2" x 1 3/8"

Gate Weight Chart: Chart "B"



\$27.69 each set for 26 - 50 cases
\$29.14 each set for 10 - 25 cases
\$30.68 each set for 1 - 9 cases
\$37.79 Broken Case Price

100% Stainless Steel. Designed for 3 1/2" and larger gate frames. Post can be any size 3 1/2" or larger. Swings 180 degrees.

3^{1/2}" SS Residential Hinge with Springs

Part No. KSS-35X35HS-WS

Qty per Case: 8 Sets, 2 Per Set

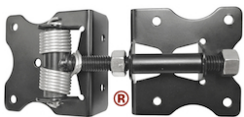
Weight: 24 LBS per Case

Made Of: Stainless Steel

Finish: Black, White

Size: 3 1/2" x 1 3/8"

Gate Weight Chart: Chart "B"



\$29.11 each set for 26 - 50 cases
\$30.65 each set for 10 - 25 cases
\$32.26 each set for 1 - 9 cases
\$39.74 Broken Case Price

100% Stainless Steel. Designed for 3 1/2" and larger gate frames. Post can be any size 3 1/2" or larger. Comes with springs for quicker closing.

2" X 3 1/2" SS Gravity Hinge

Part No. KSS-235GNG-GH

Qty per Case: 8 Sets, 2 Per Set

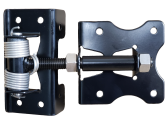
Weight: LBS per Case

Made Of: Stainless Steel

Finish: Black, White

Size: 2" x 3 1/2"

Gate Weight Chart:



\$31.40 each set for 26 - 50 cases
\$33.05 each set for 10 - 25 cases
\$34.79 each set for 1 - 9 cases
\$42.86 Broken Case Price

100% Stainless Steel. Designed for 3 1/2" and larger gate frames. Post can be any size 2" or larger. This hinge comes with 2 springs on bottom hinge and top hinge in order to close the gate faster.

Shipped with stainless steel screws. Hinges made with bearings and removable clevis pin. Swings 180 degrees.

Hinges



Prices may change without notice.

3^{1/2}" SS Gravity Residential Hinge

Part No. KSS-35X35GHS

Qty per Case: 8 Sets, 2 Per Set

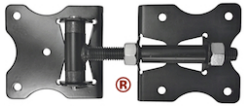
Weight: 25 LBS per Case

Made Of: Stainless Steel

Finish: Black, White

Size: 3 1/2"

Gate Weight Chart: Chart "B"



\$33.29 each set for 26 - 50 cases
\$35.04 each set for 10 - 25 cases
\$36.88 each set for 1 - 9 cases
\$45.44 Broken Case Price

100% Stainless Steel. Designed for 3 1/2" and larger gate frames. Post can be any size 3 1/2" or larger. Hinges made with bearings and a removable clevis pin. Swings 180 degrees.

3^{1/2}" SS Gravity Residential Hinge with Springs

Part No. KSS-35X35GHS-WS

Qty per Case: 8 Sets, 2 Per Set

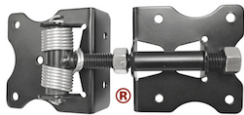
Weight: 26 LBS per Case

Made Of: Stainless Steel

Finish: Black, White

Size: 3 1/2"

Gate Weight Chart: Chart "B"



\$34.71 each set for 26 - 50 cases
\$36.54 each set for 10 - 25 cases
\$38.46 each set for 1 - 9 cases
\$47.39 Broken Case Price

100% Stainless Steel. Designed for 3 1/2" and larger gate frames. Post can be any size 3 1/2" or larger. This hinge comes with 2 springs on bottom hinge in order to close the gate faster. Hinges come with springs for quicker closing and made with bearings and a removable clevis pin. Swings 180 degrees.

3^{1/2}" Residential Hinge Wall Mount

Part No. KMS-4X35WFH

Qty per Case: 12 Sets, 2 Per Set

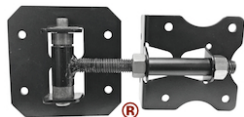
Weight: 25 LBS per Case

Made Of: Mild Steel

Finish: Black

Size: 3 1/2"

Gate Weight Chart: Chart "A"



\$30.70 each set for 26 - 50 cases
\$32.32 each set for 10 - 25 cases
\$34.02 each set for 1 - 9 cases
\$41.91 Broken Case Price

Designed for 3 1/2" and larger gate frames. Designed to be attached directly to the concrete or vinyl siding and walls. The post and gate brackets are Mild steel.

3^{1/2}" SS Residential Hinge Wall Mount

Part No. KSS-4X35WFH

Qty per Case: 12 Sets, 2 Per Set

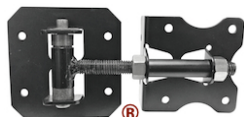
Weight: 24 LBS per Case

Made Of: Stainless Steel

Finish: Black, White

Size: 3 1/2"

Gate Weight Chart: Chart "A"



\$32.86 each set for 26 - 50 cases
\$34.59 each set for 10 - 25 cases
\$36.41 each set for 1 - 9 cases
\$44.85 Broken Case Price

Designed for 3 1/2" and larger gate frames. Designed to be attached directly to the concrete or vinyl siding and walls. All parts are Stainless Steel.

Hinges

Prices may change without notice.

4" Commercial Hinge

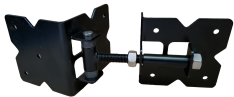


Part No. KMS-4X4HS
Qty per Case: 6 Sets, 2 Per Set
Weight: 30 LBS per Case
Made Of: Mild Steel
Finish: Black
Size: 4"
Gate Weight Chart: Chart "B"

\$33.50 each set for 26 - 50 cases
\$35.26 each set for 10 - 25 cases
\$37.12 each set for 1 - 9 cases
\$45.73 Broken Case Price

Designed for 4" and larger gate frames. Post can be any size 4" or larger. The post and gate brackets are mild steel. Swings 180 degrees.

4" SS Commercial Hinge

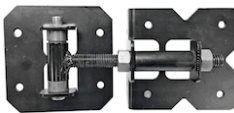


Part No. KSS-4X4HS
Qty per Case: 6 Sets, 2 Per Set
Weight: 24 LBS per Case
Made Of: Stainless Steel
Finish: Black, White
Size: 4"
Gate Weight Chart: Chart "B"

\$38.24 each set for 26 - 50 cases
\$40.26 each set for 10 - 25 cases
\$42.37 each set for 1 - 9 cases
\$52.20 Broken Case Price

100% Stainless Steel. Designed for 4" and larger gate frames. Post can be any size 4" or larger. Swings 180 degrees.

4" Commercial Hinge Wall Mount

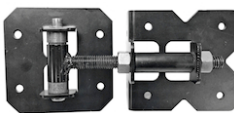


Part No. KMS-4X4WFH
Qty per Case: 12 Sets, 2 Per Set
Weight: 27 LBS per Case
Made Of: Mild Steel
Finish: Black
Size: 4"
Gate Weight Chart: Chart "B"

\$33.57 each set for 26 - 50 cases
\$35.34 each set for 10 - 25 cases
\$37.20 each set for 1 - 9 cases
\$45.83 Broken Case Price

Designed to be attached directly to wall or pillar on post side. Can be used for 180 degrees applications. Note: Space between wall and gate must be equal to the width of rail to allow gate to swing both ways. These particular hinges are designed for gates up to 72" wide and 84" high.

4" SS Commercial Hinges Wall Mount



Part No. KSS-4X4WFH
Qty per Case: 6 Sets, 2 Per Set
Weight: 24 LBS per Case
Made Of: Stainless Steel
Finish: Black, White
Size: 4"
Gate Weight Chart: Chart "B"

\$34.29 each set for 26 - 50 cases
\$36.09 each set for 10 - 25 cases
\$37.99 each set for 1 - 9 cases
\$46.80 Broken Case Price

100% Stainless Steel. Designed for 4" and larger gate frames. Post can be any size 4" or larger. Swings 180 degrees.

Hinges



Prices may change without notice.

SS Horse Head Hinges



Part No. KSS-HHR-Right/ KSS-HHR-LEFT

Qty per Case: 6 Sets, 2 Per Set

Weight: 21 LBS per Case

Made Of: Stainless Steel

Finish: Black

Size: 3 1/2"

Gate Weight Chart: Chart "B"

\$35.71 each set for 26 - 50 cases
\$37.59 each set for 10 - 25 cases
\$39.57 each set for 1 - 9 cases
\$48.75 Broken Case Price

100% Stainless Steel. This Horse Head Hinge will bring a stylish touch to your next job. The hinge is for 3 1/2" and larger gate frames. Post can be any size 3 1/2" or larger. Swings 180 degrees.

Available in either Right or Left facing.

1 3/4" Steel Frame Gate Hinges



Part No. KSS-17535HS

Qty per Case: 8 Sets, 2 Per Set

Weight: 26 LBS per Case

Made Of: Stainless Steel

Finish: Black, White

Size: 3 1/2" post, 1 3/4" x 3 1/2" gate

Gate Weight Chart: Chart "B"

\$37.56 each set for 26 - 50 cases
\$39.53 each set for 10 - 25 cases
\$41.61 each set for 1 - 9 cases
\$51.27 Broken Case Price

100% Stainless Steel. Designed for gates up to 72" wide and 84" high. Hinges are designed to wrap around three sides of the gate frame which makes the product a bit more installer friendly. These hinges are ideal for vinyl over steel frames. Swings 180 degrees.

2" Steel Frame Gate Hinges



Part No. KSS-235HS

Qty per Case: 8 Sets, 2 Per Set

Weight: 26 LBS per Case

Made Of: Stainless Steel

Finish: Black, White

Size: 3 1/2" post, 2" x 3 1/2" gate

Gate Weight Chart: Chart "B"

\$32.86 each set for 26 - 50 cases
\$34.59 each set for 10 - 25 cases
\$36.41 each set for 1 - 9 cases
\$44.85 Broken Case Price

100% Stainless Steel. Designed for gates up to 72" wide and 84" high. Hinges are designed to wrap around three sides of the gate frame which makes the product a bit more installer friendly. These hinges are ideal for vinyl over steel frames. Swings 180 degrees.

3" x 2" SS Wrap Around Hinge



Part No. KSS-3x2WRAP

Qty per Case: 12 Sets, 2 Per Set

Weight: 30 LBS per Case

Made Of: Stainless Steel

Finish: Black, White

Size: 3" x 2"

Gate Weight Chart:

\$28.51 each set for 26 - 50 cases
\$30.02 each set for 10 - 25 cases
\$31.59 each set for 1 - 9 cases
\$38.92 Broken Case Price

100% Stainless Steel. This new style wrap around, is made with our 3" hinge gate side and a 2" wrap for the post side. Will fit 3" post side and 2" or wider gate frame. Shipped with stainless steel screws. Hinges made with bearings and removable clevis pin. Swings 180 degrees.

Hinges

Prices may change without notice.

4" X 2" SS Wrap Around Hinge

Part No. KSS-4X2WRAP

Qty per Case: 6 Sets, 2 Per Set

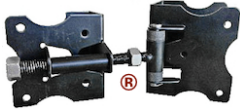
Weight: 30 LBS per Case

Made Of: Stainless Steel

Finish: Black, White

Size: 4" post, 2" gate frame

Gate Weight Chart: Chart "B"



\$46.07 each set for 26 - 50 cases
\$48.50 each set for 10 - 25 cases
\$51.05 each set for 1 - 9 cases
\$62.89 Broken Case Price

100% Stainless Steel. This new style wrap around, is made to wrap around both post and gate. Will fit 4" post side and 2" x 3 1/2" or wider gate frame. Swings 180 degrees.

4" SS Wrap Around Hinge

Part No. KSS-4X4WRAP

Qty per Case: 6 Sets, 2 Per Set

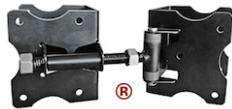
Weight: 32 LBS per Case

Made Of: Stainless Steel

Finish: Black, White

Size: 4"

Gate Weight Chart: Chart "B"



\$53.21 each set for 26 - 50 cases
\$56.02 each set for 10 - 25 cases
\$58.96 each set for 1 - 9 cases
\$72.64 Broken Case Price

100% Stainless Steel. This new style wrap around, is made to wrap around both post and gate. Will fit 4" post side and 4" gate frame. Swings 180 degrees.

5" X 2" SS Wrap Around Hinge

Part No. KSS-5X2WRAP

Qty per Case: 6 Sets, 2 Per Set

Weight: 30 LBS per Case

Made Of: Stainless Steel

Finish: Black, White

Size: 5" post, 2" gate frame

Gate Weight Chart: Chart "B"



\$46.07 each set for 26 - 50 cases
\$48.50 each set for 10 - 25 cases
\$51.05 each set for 1 - 9 cases
\$62.89 Broken Case Price

100% Stainless Steel. This new style wrap around, is made to wrap around both post and gate. Will fit 5" post side and 2" x 3 1/2" or wider gate frame. Swings 180 degrees.

5" X 4" SS Wrap Around Hinge

Part No. KSS-5X4WRAP

Qty per Case: 6 Sets, 2 Per Set

Weight: 35 LBS per Case

Made Of: Stainless Steel

Finish: Black, White

Size: 5" post, and 4" gate frame

Gate Weight Chart: Chart "B"



\$46.79 each set for 26 - 50 cases
\$49.25 each set for 10 - 25 cases
\$51.84 each set for 1 - 9 cases
\$63.86 Broken Case Price

100% Stainless Steel. This new style wrap around, is made to wrap around both post and gate. Will fit 5" post side and 4" gate frame. Swings 180 degrees.

Hinges



Prices may change without notice.

5" SS Wrap Around Hinge



Part No. KSS-5X5WRAP

Qty per Case: 6 Sets, 2 Per Set

Weight: 36 LBS per Case

Made Of: Stainless Steel

Finish: Black, White

Size: 5"

Gate Weight Chart: Chart "B"

\$55.36 each set for 26 - 50 cases
\$58.27 each set for 10 - 25 cases
\$61.34 each set for 1 - 9 cases
\$75.56 Broken Case Price

100% Stainless Steel. This new style wrap around, is made to wrap around both post and gate. Will fit 5" post side and 5" gate frame. Swings 180 degrees.

3" SS Residential Strap Style Hinge



Part No. KSS-3XTHS

Qty per Case: 12 Sets, 2 Per Set

Weight: 30 LBS per Case

Made Of: Stainless Steel

Finish: Black, White

Size: 3"

Gate Weight Chart: Chart "A"

\$30.51 each set for 26 - 50 cases
\$32.12 each set for 10 - 25 cases
\$33.81 each set for 1 - 9 cases
\$41.65 Broken Case Price

100% Stainless Steel. This hinge combines a 3" post mount bracket with an 8" long decorative bracket. Works great with wood or vinyl applications. Designed for 3" or larger gate frames or solid panels. Post can 3" or larger. Swings 180 degrees.

3 1/2" SS Residential Strap Style Hinge



Part No. KSS-35XTHS

Qty per Case: 4 Sets, 2 Per Set

Weight: 21 LBS per Case

Made Of: Mild Steel

Finish: Black

Size: 3 1/2"

Gate Weight Chart: Chart "B"

\$41.80 each set for 26 - 50 cases
\$44.00 each set for 10 - 25 cases
\$46.32 each set for 1 - 9 cases
\$57.06 Broken Case Price

100% Stainless Steel. This hinge combines a 3 1/2" post mount bracket with an 12" long decorative bracket. Works great with wood or vinyl applications. Designed for 3" or larger gate frames or solid panels. Post can 3 1/2" or larger. Swings 180 degrees.

4" Commercial Strap Style Hinge



Part No. KMS-4XTHS

Qty per Case: 4 Sets, 2 Per Set

Weight: 27 LBS per Case

Made Of: Mild Steel

Finish: Black

Size: 4"

Gate Weight Chart: Chart "B"

\$36.00 each set for 26 - 50 cases
\$37.89 each set for 10 - 25 cases
\$39.89 each set for 1 - 9 cases
\$49.14 Broken Case Price

Made of mild steel, this hinge combines a 4" post mount bracket with an 12" long decorative bracket. This hinge works great for both wood and vinyl applications. Designed for 4" and larger gate frames or solid panels. Post can be any size 4" or larger. Swings 180 degrees.

Hinges

Prices may change without notice.

4" SS Commercial Strap Style Hinge

Part No. KSS-4XTHS

Qty per Case: 4 Sets, 2 Per Set

Weight: 26 LBS per Case

Made Of: Stainless Steel

Finish: Black, White

Size: 4"

Gate Weight Chart: Chart "B"



\$41.79 each set for 26 - 50 cases
\$43.98 each set for 10 - 25 cases
\$46.30 each set for 1 - 9 cases
\$57.04 Broken Case Price

100% Stainless Steel. This hinge combines a 4" post mount bracket with an 12" long decorative bracket. This hinge works great for both wood and vinyl applications. Designed for 4" and larger gate frames or solid panels. Post can be any size 4" or larger. Swings 180 degrees.

8" SS Residential T-Hinge

Part No. KSS-OSTHS

Qty per Case: 12 Sets, 2 Per Set

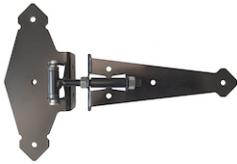
Weight: 36 LBS per Case

Made Of: Stainless Steel

Finish: Black, White

Size: 3 1/2"

Gate Weight Chart: Chart "A"



\$31.10 each set for 26 - 50 cases
\$32.74 each set for 10 - 25 cases
\$34.46 each set for 1 - 9 cases
\$42.45 Broken Case Price

100% Stainless Steel. This design works great for both wood and vinyl applications. Gate bracket has 8" long strap and goes on 2" gate frame or larger. Post bracket is 8" tall and goes on a 3 1/2" post or larger. Swings 180 degrees.

Decorative Strap Hinge

Part No. KMS-CHAPMAN

Qty per Case: 1 Sets, 2 Per Set

Weight: LBS per Case

Made Of: Mild Steel

Finish: Black

Size: 24" & 48"

Gate Weight Chart: Chart "D"



\$316.77 each set for 26 - 50 cases
\$333.44 each set for 10 - 25 cases
\$350.99 each set for 1 - 9 cases
\$432.39 Broken Case Price

Mild Steel Decorative Strap Hinge. Top Strap is 24" long and bottom strap is 48" long, both straps come with an attachable strap for the back side of the gate. This is a heavy duty hinge set to hold up large gates. Comes with mounting hardware.

SS Wood Strap Hinge

Part No. KSS-WSH

Qty per Case: 12 Sets, 2 Per Set

Weight: LBS per Case

Made Of: Stainless Steel

Finish: Black

Size: 8"

Gate Weight Chart:

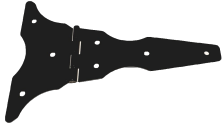


\$23.01 each set for 26 - 50 cases
\$24.23 each set for 10 - 25 cases
\$25.50 each set for 1 - 9 cases
\$31.41 Broken Case Price

This 100% Stainless Steel hinge is great for wood fences and gates. With 8" post and gate side strap style brackets, this hinge will complete that ornamental look.

Prices may change without notice.

SS Wood T-Hinge



Part No. KSS-WTH

Qty per Case: 12 Sets, 2 Per Set

Weight: LBS per Case

Made Of: Stainless Steel

Finish: Black

Size: 8" Gate, 3" Post

Gate Weight Chart:

\$23.01 each set for 26 - 50 cases
\$24.23 each set for 10 - 25 cases
\$25.50 each set for 1 - 9 cases
\$31.41 Broken Case Price

This 100% Stainless Steel hinge is great for wood fences and gates. With 3" butterfly style post side bracket and a 8" strap style gate side bracket, this hinge will complete that ornamental look.

SS Wood Butterfly Hinge



Part No. KSS-WBH

Qty per Case: 12 Sets, 2 Per Set

Weight: LBS per Case

Made Of: Stainless Steel

Finish: Black

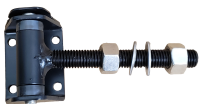
Size: 3"

Gate Weight Chart:

\$23.01 each set for 26 - 50 cases
\$24.23 each set for 10 - 25 cases
\$25.50 each set for 1 - 9 cases
\$31.41 Broken Case Price

This 100% Stainless Steel hinge is great for wood fences and gates. With a 3" post and gate side butterfly style brackets, this hinge will complete that ornamental look.

2" MS Residential Post & Wall Mount Dallas Hinge



Part No. KMS-DCH-2

Qty per Case: 12 Sets, 2 Per Set

Weight: 34 LBS per Case

Made Of: Mild Steel

Finish: Black

Size: 2"

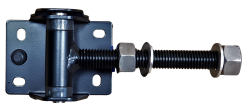
Gate Weight Chart:

\$27.60 each set for 26 - 50 cases
\$29.05 each set for 10 - 25 cases
\$30.58 each set for 1 - 9 cases
\$37.67 Broken Case Price

Originally designed for the Dallas Cowboy Stadium, in Dallas, Texas, these are true 180 degrees hinges. Designed to mount on wall or pillar face larger than 2", with a minimum gate frame of 3/4".

Furnished with 1/4" Super Tek Screws.

4" MS Commercial Post & Wall Mount Dallas Hinge



Part No. KMS-DCH-4

Qty per Case: 12 Sets, 2 Per Set

Weight: 41 LBS per Case

Made Of: Mild Steel

Finish: Black

Size: 4"

Gate Weight Chart:

\$31.11 each set for 26 - 50 cases
\$32.75 each set for 10 - 25 cases
\$34.48 each set for 1 - 9 cases
\$42.47 Broken Case Price

Originally designed for the Dallas Cowboy Stadium, in Dallas, Texas, these are true 180 degrees hinges. Designed to mount on wall or pillar face larger than 4", with a minimum gate frame of 3/4".

Furnished with 1/4" Super Tek Screws.

Hinges

Prices may change without notice.

MS Commercial Duty Embassy Hinge

Part No. KMS-HDEMBCHS

Qty per Case: 4 Sets, 2 Per Set

Weight: 27 LBS per Case

Made Of: Mild Steel

Finish: Black

Size: 2 1/2" post, 1 3/4" gate frame

Gate Weight Chart: Chart "C"



\$107.14 each set for 26 - 50 cases
\$112.78 each set for 10 - 25 cases
\$118.72 each set for 1 - 9 cases
\$146.25 Broken Case Price

Designed for use with steel or iron gates. Gate side bracket adjusts 1/2" - 2 3/4". Made of mild steel and is furnished with 5/16" large Super Tek screws for installation. Fits 2" post, 2" gate frame.

SS Commercial Duty Embassy Hinge

Part No. KSS-HDEMBCHS

Qty per Case: 4 Sets, 2 Per Set

Weight: 26 LBS per Case

Made Of: Stainless Steel

Finish: Black, White

Size: 2 1/2" post, 1 3/4" gate frame

Gate Weight Chart: Chart "C"



\$129.79 each set for 26 - 50 cases
\$136.62 each set for 10 - 25 cases
\$143.81 each set for 1 - 9 cases
\$177.16 Broken Case Price

100% Stainless Steel. Designed for use with steel or iron gates. Gate side bracket adjusts 1/2" - 2 3/4", stainless steel T-Rod and nuts. Furnished with 5/16" large Super Tek Screws for installation. Fits 2" post, 2" gate frame. Removable E-Clip, furnished with security screw.

MS Industrial Duty Embassy Hinge

Part No. KMS-HDEMBIHS

Qty per Case: 2 Sets, 2 Per Set

Weight: 37 LBS per Case

Made Of: Mild Steel

Finish: Black

Size: 4" post, 2" gate frame

Gate Weight Chart: Chart "D"



\$174.29 each set for 26 - 50 cases
\$183.46 each set for 10 - 25 cases
\$193.11 each set for 1 - 9 cases
\$237.90 Broken Case Price

Used with large scale steel and iron gates. Made of mild steel. Gate side bracket adjusts from 5/8" - 3", T-Rod, nuts, self-lubricating bushing and Super Tek Screws for locating of hinges. Removable E-Clip, furnished with security screw.

SS Industrial Duty Embassy Hinge

Part No. KSS-HDEMBIHS

Qty per Case: 2 Sets, 2 Per Set

Weight: 36 LBS per Case

Made Of: Stainless Steel

Finish: Black, White

Size: 4" post, 2" gate frame

Gate Weight Chart: Chart "D"



\$238.57 each set for 26 - 50 cases
\$251.13 each set for 10 - 25 cases
\$264.35 each set for 1 - 9 cases
\$325.65 Broken Case Price

100% Stainless Steel. Used with large scale steel and iron gates. Gate side bracket adjusts from 5/8" - 3", stainless steel T-Rod, nuts, self-lubricating bushing, Super Tek Screws for locating of hinges, and Carriage Bolts for through bolting to ensure secure installation. **SPECIAL ORDER ONLY.**

Hinges



Prices may change without notice.

4" MS Clamp-On Embassy Hinge



Part No. KMS-EMB4X4-C

Qty per Case: 4 Sets, 2 Per Set

Weight: 18 LBS per Case

Made Of: Mild Steel

Finish: Black

Size: 4" post, 1 3/4" gate frame

Gate Weight Chart: Chart "C"

\$98.66 each set for 26 - 50 cases
\$103.85 each set for 10 - 25 cases
\$109.32 each set for 1 - 9 cases
\$134.67 Broken Case Price

This hinge is best used with iron or aluminum and is made of mild steel. Post side brackets with a gate side bracket and for any size square gave frame 1 3/4" and up. Great for walk gates and double drive gates due to its 3/4" (T-Rod). Quite often used on dumpster enclosures.

4" SS Clamp-On Embassy Hinge



Part No. KSS-EMB4X4-C

Qty per Case: 4 Sets, 2 Per Set

Weight: 16 LBS per Case

Made Of: Stainless Steel

Finish: Black, White

Size: 4" post, 1 3/4" gate frame

Gate Weight Chart: Chart "C"

\$126.29 each set for 26 - 50 cases
\$132.93 each set for 10 - 25 cases
\$139.93 each set for 1 - 9 cases
\$172.38 Broken Case Price

100% Stainless Steel. Best used with iron or aluminum. Post side brackets with a gate side bracket and for any size square gave frame 1 3/4" and up. Great replacements for the old style Monumental, weld on hinges, replacing aluminum and steel "Page" hardware.

6" MS Clamp-On Embassy Hinge



Part No. KMS-EMB6X6-C

Qty per Case: 2 Sets, 2 Per Set

Weight: 24 LBS per Case

Made Of: Mild Steel

Finish: Black

Size: 6" post, 1 3/4" gate frame

Gate Weight Chart: Chart "C"

\$105.54 each set for 26 - 50 cases
\$111.10 each set for 10 - 25 cases
\$116.94 each set for 1 - 9 cases
\$144.07 Broken Case Price

Clamp on post side fits 6" square post. Gate side fits 1 3/4" and larger gate frame. This hinge is a great replacement option for old style "Monumental" or "Page" brand hinges. Requires no welding. Made of mild steel. Swings 180 degrees.

6" SS Clamp-On Embassy Hinge



Part No. KSS-EMB6X6-C

Qty per Case: 2 Sets, 2 Per Set

Weight: 22 LBS per Case

Made Of: Stainless Steel

Finish: Black, White

Size: 6" post, 1 3/4" gate frame

Gate Weight Chart: Chart "C"

\$123.20 each set for 26 - 50 cases
\$129.68 each set for 10 - 25 cases
\$136.51 each set for 1 - 9 cases
\$168.17 Broken Case Price

100% Stainless Steel. Clamp on post side fits 6" square post. Gate side fits 1 3/4" and larger gate frame. This hinge is a great replacement option for old style "Monumental" or "Page" brand hinges. Requires no welding. Made of Stainless Steel.

Hinges

Prices may change without notice.

2^{3/8}" x 1^{3/8}"-1^{5/8}" Hot-Dipped Galvanized Hinge

Part No. KCLH-238X138

Qty per Case: 12 Sets, 2 Per Set

Weight: 24 LBS per Case

Made Of: Mild Steel

Finish: Galvanized

Size: 2 3/8" post, 1 3/8"-1 5/8" gate

Gate Weight Chart: Chart "A"



\$23.27 each set for 26 - 50 cases
\$24.50 each set for 10 - 25 cases
\$25.79 each set for 1 - 9 cases
\$31.77 Broken Case Price

Residential, hot-dipped galvanized walk-gate sized hinge. 2 3/8" diameter post side brackets with a gate side bracket and for a 1 3/8" or 1 5/8" diameter gate frame. Swings 180 degrees. (Can also be made "Round to Square")

2^{7/8}" Hot-Dipped Galvanized Hinge

Part No. KCLH-278

Qty per Case: 8 Sets, 2 Per Set

Weight: 36 LBS per Case

Made Of: Mild Steel

Finish: Galvanized

Size: 2 7/8" post, 1 5/8" to 1 7/8" gate

Gate Weight Chart: Chart "B"



\$48.40 each set for 26 - 50 cases
\$50.95 each set for 10 - 25 cases
\$53.63 each set for 1 - 9 cases
\$66.07 Broken Case Price

Commercial walk-gate sized hinge. Can also be used for double drive gate. 2-7/8" diameter post side brackets with a gate side bracket and for a 1-5/8" to 1-7/8" diameter gate frame. Swings 180 degrees. (Can also be made "Round to Square")

4" M.S., Hot-Dipped Galvanized Hinge

Part No. KCLH-4D

Qty per Case: 4 Sets, 2 Per Set

Weight: 32 LBS per Case

Made Of: Mild Steel

Finish: Galvanized

Size: 4" post, 1 5/8" - 1 7/8" gate

Gate Weight Chart: Chart "C"



\$76.20 each set for 26 - 50 cases
\$80.21 each set for 10 - 25 cases
\$84.43 each set for 1 - 9 cases
\$104.01 Broken Case Price

Designed for double drive gates. May also be used for dumpster enclosures. This hinge is best used for double drive gates. 4" diameter post side brackets with a gate side bracket and for a 1 -5/8" to 1-7/8" diameter gate frame. Swings 180 degrees. (Can also be made "Round to Square")

6^{5/8}" Round Post To Sq. Gate Frame Hinge

Part No. KCLH-658

Qty per Case: 1 Sets, 2 Per Set

Weight: 16 LBS per Case

Made Of: Combo - SS & MS

Finish: Galvanized

Size: 6 5/8" post, 1 3/4" gate frame

Gate Weight Chart: Chart "D"



\$121.43 each set for 26 - 50 cases
\$127.82 each set for 10 - 25 cases
\$134.55 each set for 1 - 9 cases
\$165.75 Broken Case Price

6 5/8" round post side, combined with a gate bracket that fits any square tube 1 3/4" or larger. Allows use of square tube for gate frames where round posts are used for the fence. These hinges are ideal for all walked in double drive gates. Often used on dumpster enclosures.

Hinges



Prices may change without notice.

8^{5/8}" Round Post To Sq. Gate Frame Hinge

Part No. KCLH-858D

Qty per Case: 1 Sets, 2 Per Set

Weight: 22 LBS per Case

Made Of: Mild Steel

Finish: Galvanized

Size: 8 5/8" post, 2" gate frame

Gate Weight Chart: Chart "D"



\$135.71 each set for 26 - 50 cases
\$142.86 each set for 10 - 25 cases
\$150.38 each set for 1 - 9 cases
\$185.25 Broken Case Price

8 5/8" round post side, combined with a gate bracket that fits any square tube 2" or larger. Allows use of square tube for gate frames where round posts are used for the fence. These hinges are ideal for all walk gate and double drive gates. Often used on dumpster enclosures.

4" SS Ranch Style Agricultural Hinge

Part No. KNR-PR-AGH-4

Qty per Case: 6 Sets, 2 Per Set

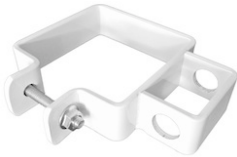
Weight: 20 LBS per Case

Made Of: Stainless Steel

Finish: White

Size: 4"

Gate Weight Chart: Chart "C"



\$31.43 each set for 26 - 50 cases
\$33.08 each set for 10 - 25 cases
\$34.82 each set for 1 - 9 cases
\$42.90 Broken Case Price

Allows use of agricultural style welded pipe gates to be used on vinyl posts. Easily adjust your gate height with this fully adjustable hinge. Fits 4" X 4" post. J-Bolt is not included, but is available.

5" SS Ranch Style Agricultural Hinge

Part No. KNR-PR-AGH-5

Qty per Case: 6 Sets, 2 Per Set

Weight: 24 LBS per Case

Made Of: Stainless Steel

Finish: White

Size: 5"

Gate Weight Chart: Chart "C"



\$33.50 each set for 26 - 50 cases
\$35.26 each set for 10 - 25 cases
\$37.12 each set for 1 - 9 cases
\$45.73 Broken Case Price

Allows use of agricultural style welded pipe gates to be used on vinyl posts. Easily adjust your gate height with this fully adjustable hinge. Fits 5" X 5" post. J-Bolt is not included, but is available.

Self Closing Spring for 3" Residential Hinges

Part No. KSS-3SCS

Qty per Case: 12 Sets, 4 Per Set

Weight: 1 LBS per Case

Made Of: Stainless Steel

Finish: Stainless

Size: 3"

Gate Weight Chart:



\$1.93 each set for 26 - 50 cases
\$2.03 each set for 10 - 25 cases
\$2.14 each set for 1 - 9 cases
\$2.63 Broken Case Price

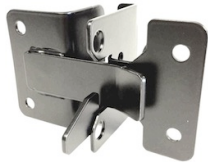
Comes with 2 left and 2 right springs. These springs are made of stainless steel. Designed for gates up to 42" wide and 72" high. They are passivated and left plain.

Each version of these springs come in packages of four. They are very easy to install with our helpful video!

Latches and Drop Rods

Prices may change without notice.

1 1/2" x 2 1/2" Residential Latch



Part No. KSS-15X25L

Qty per Case: 18

Weight: 13 LBS per Case

Made Of: Stainless Steel

Finish: Black, White

Size: 1 1/2" x 2 1/2"

\$15.29 each set for 26 - 50 cases
\$16.09 each set for 10 - 25 cases
\$16.94 each set for 1 - 9 cases
\$20.87 Broken Case Price

Ideal for walk gates, this all stainless steel latch relies on gravity to help keep it closed. Lockable, unhandled, simple to operate, and durable.

3" Residential Latch



Part No. KSS-3X3LS

Qty per Case: 12

Weight: 14 LBS per Case

Made Of: Stainless Steel

Finish: Black, White

Size: 3"

\$14.27 each set for 26 - 50 cases
\$15.02 each set for 10 - 25 cases
\$15.81 each set for 1 - 9 cases
\$19.48 Broken Case Price

All components are made of stainless steel. The latch does not rust over time as paint is worn off by bar hitting receiver. This latch is non-handed, and can be converted easily in the field to either side of gate. For use on walk gates.

3" Residential Latch Includes 2 Way Lever Arm



Part No. KSS-3X3WLBS

Qty per Case: 12

Weight: 15 LBS per Case

Made Of: Stainless Steel

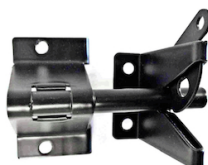
Finish: Black, White

Size: 3"

\$19.99 each set for 26 - 50 cases
\$21.04 each set for 10 - 25 cases
\$22.15 each set for 1 - 9 cases
\$27.29 Broken Case Price

Same as our 3" Residential Latch, with the added lever arm convenience of opening from either side of gate! Does not rust over time as paint is worn off by bar hitting receiver. This latch is non-handed, and can be converted easily in the field. For use on walk gates.

Small Gravity One Way Latch



Part No. KSS-GL-1

Qty per Case: 18

Weight: 9 LBS per Case

Made Of: Stainless Steel

Finish: Black, White

Size: 1 1/2" Post, 1 3/8" Gate

\$11.81 each set for 26 - 50 cases
\$12.43 each set for 10 - 25 cases
\$13.09 each set for 1 - 9 cases
\$16.12 Broken Case Price

This latch is an old favorite. This all stainless steel latch works on virtually any gate, and has been an industry standard design for years. Non-handed, bar is mounted to gate, with catch mounted to post (set back from radius on vinyl).

Latches and Drop Rods



Prices may change without notice.

Small Gravity Two Way Latch

Part No. KSS-GL-2

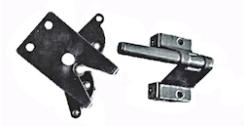
Qty per Case: 18

Weight: 9 LBS per Case

Made Of: Stainless Steel

Finish: Black, White

Size: 1 1/2" Post, 1 3/8" Gate



\$12.53 each set for 26 - 50 cases
\$13.19 each set for 10 - 25 cases
\$13.88 each set for 1 - 9 cases
\$17.10 Broken Case Price

MFT's new version of an old favorite incorporates gate brackets that wrap around and secure with screws from two sides. Stainless Steel, non-handed, bar mounts to gate, with catch mounted to outside corner of post, for greater adjustment ability.

Small Dual Latch

Part No. KSS-DUAL15

Qty per Case: 18

Weight: 14 LBS per Case

Made Of: Stainless Steel

Finish: Black, White

Size: 2" Post, 1 3/4" Gate



\$15.73 each set for 26 - 50 cases
\$16.56 each set for 10 - 25 cases
\$17.43 each set for 1 - 9 cases
\$21.47 Broken Case Price

Often imitated, this latch is a favorite! Sometimes referred to as a "hatchet latch", it has a spring loaded "clicker" and positive latching design to prevent "bounce outs", for secure latching. Fits on all posts and gate frames 1 3/4" and larger. Integral gate pull built into bracket. It has a 3/8" bar.

Large Lockable Economy Latch with 3/8" Bar

Part No. KSS-ECLSS38

Qty per Case: 12

Weight: 14 LBS per Case

Made Of: Stainless Steel

Finish: Black, White

Size: 2" Post, 1 3/4" Gate



\$16.59 each set for 26 - 50 cases
\$17.46 each set for 10 - 25 cases
\$18.38 each set for 1 - 9 cases
\$22.64 Broken Case Price

Often imitated, this latch is a favorite! Sometimes referred to as a "hatchet latch", it has a spring loaded "clicker" for secure latching of heavy gates. All components are stainless steel. Fits on all posts and gate frames 2" and larger. It has a 3/8" bar and is lockable.

Large Lockable Economy Latch With 1/2" Bar

Part No. KSS-ECLSS

Qty per Case: 12

Weight: 14 LBS per Case

Made Of: Stainless Steel

Finish: Black, White

Size: 2" Post, 1 3/4" Gate



\$16.59 each set for 26 - 50 cases
\$17.46 each set for 10 - 25 cases
\$18.38 each set for 1 - 9 cases
\$22.64 Broken Case Price

Often imitated, this latch is a favorite! Sometimes referred to as a "hatchet latch", it has a spring loaded "clicker" for secure latching of heavy gates. All components are stainless steel. Fits on all posts and gate frames 2" and larger. It has a 1/2" bar and is lockable.

Latches and Drop Rods

Prices may change without notice.

Dual Lockable Economy Latch with 3/8" Bar

Part No. KSS-DUAL38

Qty per Case: 12

Weight: 15 LBS per Case

Made Of: Stainless Steel

Finish: Black, White

Size: 4"



\$18.67 each set for 26 - 50 cases
\$19.65 each set for 10 - 25 cases
\$20.69 each set for 1 - 9 cases
\$25.49 Broken Case Price

Similar to the Large Economy Latch, it can be locked from both sides. Sometimes referred to as a "hatchet latch", it has a spring loaded "clicker" for secure latching. All components are stainless steel. Fits a gate frame of 2" or larger, and a post of 5" or larger.

Dual Lockable Economy Latch with 1/2" Bar

Part No. KSS-DUAL

Qty per Case: 12

Weight: 15 LBS per Case

Made Of: Stainless Steel

Finish: Black, White

Size: 4"



\$18.67 each set for 26 - 50 cases
\$19.65 each set for 10 - 25 cases
\$20.69 each set for 1 - 9 cases
\$25.49 Broken Case Price

Similar to the Large Economy Latch, it can be locked from both sides. Sometimes referred to as a "hatchet latch", it has a spring loaded "clicker" for secure latching of heavy gates. All components are stainless steel. Fits a gate frame of 2" or larger, and a post of 5" or larger.

Dual Lockable 6" Economy Latch

Part No. KSS-DUAL-6

Qty per Case: 12

Weight: 18 LBS per Case

Made Of: Stainless Steel

Finish: Black, White

Size: 6"



\$22.36 each set for 26 - 50 cases
\$23.53 each set for 10 - 25 cases
\$24.77 each set for 1 - 9 cases
\$30.52 Broken Case Price

Made for 6" and larger posts! Similar to the Large Economy Latch, and can be locked from both sides. It has a spring loaded "clicker" for secure latching of heavy gates. All components are stainless steel. Fits a gate frame of 2" or larger, and a post of 6" or larger.

Heavy Duty Commercial Embassy Latch

Part No. KMS-HDCEL

Qty per Case: 12

Weight: 21 LBS per Case

Made Of: Mild Steel

Finish: Black

Size: 6" Post, 2" Gate



\$19.93 each set for 26 - 50 cases
\$20.98 each set for 10 - 25 cases
\$22.08 each set for 1 - 9 cases
\$27.20 Broken Case Price

The Heavy Duty Embassy Commercial Latch allows the same ease of installation and operation as our Economy Latch, while providing the strength needed for heavier gates. Ideal for equipment or dumpster enclosures, the latch is lockable and built to withstand years of service on all but the very heaviest of gates.

Latches and Drop Rods



Prices may change without notice.

2" Charleston Latch



Part No. KMS-CHARLESTONIILATCH

Qty per Case: 12
Weight: 24 LBS per Case
Made Of: Mild Steel
Finish: Black
Size: 2"

\$33.14 each set for 26 - 50 cases
\$34.89 each set for 10 - 25 cases
\$36.72 each set for 1 - 9 cases
\$45.24 Broken Case Price

Design based on historical latches made before the Civil War, and still in service. Made heavy duty to last, and last. Fits on 2" x 2" post and frame or larger, lockable. Bumpers on latch add a cushion close for a lifelong endurance of the latch.

3" Charleston Latch



Part No. KMS-CHARLESTONIILATCH

Qty per Case: 12
Weight: 24 LBS per Case
Made Of: Mild Steel
Finish: Black
Size: 3"

\$33.14 each set for 26 - 50 cases
\$34.89 each set for 10 - 25 cases
\$36.72 each set for 1 - 9 cases
\$45.24 Broken Case Price

Design based on historical latches made before the Civil War, and still in service. Made heavy duty to last, and last. Fits on 2" x 2" post and frame or larger, lockable. Bumpers on latch add a cushion close for a lifelong endurance of the latch.

4" Charleston Latch



Part No. KMS-CHARLESTONIVLATCH

Qty per Case: 12
Weight: 26 LBS per Case
Made Of: Mild Steel
Finish: Black
Size: 4"

\$34.64 each set for 26 - 50 cases
\$36.47 each set for 10 - 25 cases
\$38.39 each set for 1 - 9 cases
\$47.29 Broken Case Price

Design based on historical latches made before the Civil War. For heavy walk and estate gates, can be used with drop rod for double drive, lockable. Made to last and last. Fits on 4" x 4" post or larger. Bumpers on latch add a cushion close for a lifelong endurance of the latch.

2" Gate Latch for Walk and Double Gates



Part No. KMS-2FLIP

Qty per Case: 6
Weight: 6 LBS per Case
Made Of: Mild Steel
Finish: Black
Size: 2"

\$9.35 each set for 26 - 50 cases
\$9.84 each set for 10 - 25 cases
\$10.36 each set for 1 - 9 cases
\$12.76 Broken Case Price

A variation on the traditional fork latch. this mild steel latch is designed for ornamental steel and provides positive, lockable security for your ornamental installation with easy operation and good looks.

Latches and Drop Rods

Prices may change without notice.

2" Gate Latch for Walk and Double Gates

Part No. KSS-2FLIP

Qty per Case: 6

Weight: 6 LBS per Case

Made Of: Stainless Steel

Finish: Black

Size: 2"



\$17.00 each set for 26 - 50 cases
\$17.89 each set for 10 - 25 cases
\$18.84 each set for 1 - 9 cases
\$23.21 Broken Case Price

A variation on the traditional fork latch. this stainless steel latch is designed for ornamental steel and provides positive, lockable security for your ornamental installation with easy operation and good looks.

2^{1/2}" Gate Latch for Walk and Double Gates

Part No. KSS-25FLIP

Qty per Case: 6

Weight: 8 LBS per Case

Made Of: Stainless Steel

Finish: Black

Size: 2 1/2"



\$17.55 each set for 26 - 50 cases
\$18.47 each set for 10 - 25 cases
\$19.45 each set for 1 - 9 cases
\$23.96 Broken Case Price

A variation on the traditional fork latch. this stainless steel latch is designed for ornamental steel and provides positive, lockable security for your ornamental installation with easy operation and good looks.

Embassy 1" SS Heavy Duty Slide Bolt Latch

Part No. KSS-HDEMBSL-PLAIN

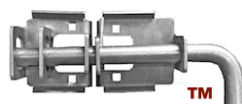
Qty per Case: 5

Weight: 29 LBS per Case

Made Of: Stainless Steel

Finish: Stainless

Size: 1" Bolt



\$61.86 each set for 26 - 50 cases
\$65.11 each set for 10 - 25 cases
\$68.54 each set for 1 - 9 cases
\$84.44 Broken Case Price

Heavy Duty latch for the largest and most abused gates. Works well on dumpster enclosures and is lockable. Fits any gate big enough to need a latch this strong! Comes with carriage bolts.

Embassy MS Heavy Duty 1" Slide Bolt Latch

Part No. KMS-HDEMBSL

Qty per Case: 4

Weight: 29 LBS per Case

Made Of: Mild Steel

Finish: Black

Size: 1" Bolt



\$40.43 each set for 26 - 50 cases
\$42.56 each set for 10 - 25 cases
\$44.80 each set for 1 - 9 cases
\$55.19 Broken Case Price

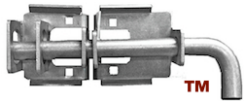
Heavy Duty latch for the largest and most abused gates. Works well on dumpster enclosures and is lockable. Fits any gate big enough to need a latch this strong!

Latches and Drop Rods



Prices may change without notice.

Embassy 1" Heavy Duty Slide Bolt Latch (Galvanized)



Part No. KMS-HDEMBSLHDG

Qty per Case: 4

Weight: 29 LBS per Case

Made Of: Mild Steel

Finish: Galvanized

Size: 1" Bolt

\$41.86 each set for 26 - 50 cases
\$44.06 each set for 10 - 25 cases
\$46.38 each set for 1 - 9 cases
\$57.14 Broken Case Price

Heavy Duty latch for the largest and most abused gates. Works well on dumpster enclosures and is lockable. Fits any gate big enough to need a latch this strong! Hot Dipped Galvanized. Comes with carriage bolts.

1 1/2" Safety Horse Latch with 1" Catch



Part No. KSS-4X4SLS2

Qty per Case: 4

Weight: 13 LBS per Case

Made Of: Stainless Steel

Finish: Black, White

Size: 1 1/2"

\$23.00 each set for 26 - 50 cases
\$24.21 each set for 10 - 25 cases
\$25.48 each set for 1 - 9 cases
\$31.40 Broken Case Price

This all stainless steel, spring loaded latch mounts under rail. This prevents horses from injuring themselves on it. With the latch's "smooth pull" design, horses also cannot open the gate. This latch is for 1 1/2" rails and comes with 3 1/2" catch. White is optional - call for details.

1 1/2" Safety Horse Latch with 2" Catch



Part No. KSS-4X4SLS4

Qty per Case: 4

Weight: 13 LBS per Case

Made Of: Stainless Steel

Finish: Black, White

Size: 1 1/2"

\$23.00 each set for 26 - 50 cases
\$24.21 each set for 10 - 25 cases
\$25.48 each set for 1 - 9 cases
\$31.40 Broken Case Price

This all stainless steel, spring loaded latch mounts under rail. This prevents horses from injuring themselves on it. With the latch's "smooth pull" design, horses also cannot open the gate. This latch is for 1 1/2" rails and comes with 4" catch. White is optional - call for details.

1 1/2" Safety Horse Latch with 2 1/2" Catch



Part No. KSS-4X4SLS5

Qty per Case: 4

Weight: 13 LBS per Case

Made Of: Stainless Steel

Finish: Black, White

Size: 1 1/2"

\$23.00 each set for 26 - 50 cases
\$24.21 each set for 10 - 25 cases
\$25.48 each set for 1 - 9 cases
\$31.40 Broken Case Price

This all stainless steel, spring loaded latch mounts under rail. This prevents horses from injuring themselves on it. With the latch's "smooth pull" design, horses also cannot open the gate. This latch is for 1 1/2" rails and comes with 5" catch. White is optional - call for details.

Latches and Drop Rods

Prices may change without notice.

2" Safety Horse Latch with 1" Catch

Part No. KSS-4X4SLS22

Qty per Case: 4

Weight: 16 LBS per Case

Made Of: Stainless Steel

Finish: Black, White

Size: 2"



\$23.79 each set for 26 - 50 cases
\$25.04 each set for 10 - 25 cases
\$26.36 each set for 1 - 9 cases
\$32.47 Broken Case Price

This all stainless steel, spring loaded latch mounts under rail. This prevents horses from injuring themselves on it. With the latch's "smooth pull" design, horses also cannot open the gate. This latch is for 2" rails. Comes with 3 1/2" catch. White is optional - call for details.

2" Safety Horse Latch with 2" Catch

Part No. KSS-4X4SLS24

Qty per Case: 4

Weight: 16 LBS per Case

Made Of: Stainless Steel

Finish: Black, White

Size: 2"



\$23.79 each set for 26 - 50 cases
\$25.04 each set for 10 - 25 cases
\$26.36 each set for 1 - 9 cases
\$32.47 Broken Case Price

This all stainless steel, spring loaded latch mounts under rail. This prevents horses from injuring themselves on it. With the latch's "smooth pull" design, horses also cannot open the gate. This latch is for 2" rails. Comes with 4" catch. White is optional - call for details.

2" Safety Horse Latch with 2 1/2" Catch

Part No. KSS-4X4SLS25

Qty per Case: 4

Weight: 16 LBS per Case

Made Of: Stainless Steel

Finish: Black, White

Size: 2"



\$23.79 each set for 26 - 50 cases
\$25.04 each set for 10 - 25 cases
\$26.36 each set for 1 - 9 cases
\$32.47 Broken Case Price

This all stainless steel, spring loaded latch mounts under rail. This prevents horses from injuring themselves on it. With the latch's "smooth pull" design, horses also cannot open the gate. This latch is for 2" rails. Comes with 5" catch. White is optional - call for details.

Double Drive Gate Bar Latch

Part No. KSS-DDLS

Qty per Case: 12

Weight: 16 LBS per Case

Made Of: Stainless Steel

Finish: Black, White

Size: 3 1/4"



\$19.86 each set for 26 - 50 cases
\$20.90 each set for 10 - 25 cases
\$22.00 each set for 1 - 9 cases
\$27.11 Broken Case Price

Versatile double drive gate latch adjusts 0-4" to match gate spacing. All stainless steel components are lockable. Works well with a drop rod. Fits gate frames 1" x 3 1/4" or larger.

Latches and Drop Rods



Prices may change without notice.

Heavy Duty Double Drive Large Latch

Part No. KMS-HDDDL

Qty per Case: 2

Weight: 18 LBS per Case

Made Of: Mild Steel

Finish: Black

Size: 2'



\$44.86 each set for 26 - 50 cases
\$47.22 each set for 10 - 25 cases
\$49.70 each set for 1 - 9 cases
\$61.23 Broken Case Price

Built for large double drive gates, this latch bar is nearly 2' long, and made of heavy gauge steel. Used with drop rod for security. The latch is lockable. If used on aluminum, it's recommended that a barrier be put between the latch and the aluminum to prevent corrosion.

Yutka Latch

Part No. KNR-YUTKA

Qty per Case: 12

Weight: 27 LBS per Case

Made Of: Stainless Steel

Finish: Black

Size: Up to 2 1/8"



\$29.68 each set for 26 - 50 cases
\$31.24 each set for 10 - 25 cases
\$32.89 each set for 1 - 9 cases
\$40.52 Broken Case Price

Mild steel handle, all other components stainless steel. May be used horizontally or with handle turned 90 degrees. For single or double gates, in most materials. Fits gates up to 2 1/8" thick. The latch is also lockable.

Stainless Steel Gate Handle

Part No. KNR-RGH

Qty per Case: 18

Weight: 4 LBS per Case

Made Of: Stainless Steel

Finish: Black, White

Size: 8 7/8"



\$4.31 each set for 26 - 50 cases
\$4.54 each set for 10 - 25 cases
\$4.78 each set for 1 - 9 cases
\$5.89 Broken Case Price

Gate Handle for easy opening and closing. Comes with 2 Stainless Steel Philips-Head Screws.

SS Ornamental Gate Handle

Part No. KSS-HANDLE

Qty per Case: 12

Weight: 3 LBS per Case

Made Of:

Finish: Black, White

Size: 7 1/2"



\$4.74 each set for 26 - 50 cases
\$4.99 each set for 10 - 25 cases
\$5.26 each set for 1 - 9 cases
\$6.47 Broken Case Price

Ornamental Gate Handle made with stainless steel, for easy opening and closing of gates. Comes with 2 Stainless Steel Philips-Head Screws.

Latches and Drop Rods

Prices may change without notice.

Plastic Gate Handle

Part No. VP-HANDLES

Qty per Case: 12

Weight: 13 LBS per Case

Made Of: Plastic

Finish: Black, White

Size:



\$3.57 each set for 26 - 50 cases
\$3.76 each set for 10 - 25 cases
\$3.96 each set for 1 - 9 cases
\$4.88 Broken Case Price

Injection-molded with hidden corners. Flaps cover screw holes.
 Does not come with screws.

24" x 1/2" Residential Drop Rod

Part No. KMS-12DR

Qty per Case: 6

Weight: 14 LBS per Case

Made Of: Mild Steel

Finish: Black

Size: 24" x 1/2"



\$16.44 each set for 26 - 50 cases
\$17.31 each set for 10 - 25 cases
\$18.22 each set for 1 - 9 cases
\$22.44 Broken Case Price

Designed to hold heavy double drive gates in place to prevent swaying. Made of Mild Steel components for use with any fence material. 1/2" diameter x 24" long, furnished with hanger that doesn't allow drop rod to be removed when placed correctly, and lockable guides. Adjustable bolt throw depends on guide placement.

24" x 5/8" Residential Drop Rod

Part No. KSS-58DR24

Qty per Case: 6

Weight: 18 LBS per Case

Made Of: Stainless Steel

Finish: Black, White

Size: 24" x 5/8"



\$21.84 each set for 26 - 50 cases
\$22.99 each set for 10 - 25 cases
\$24.20 each set for 1 - 9 cases
\$29.82 Broken Case Price

Designed to hold heavy double drive gates in place to prevent swaying. All stainless steel components for use with any fence material. 5/8" diameter x 24" long, furnished with hanger that doesn't allow drop rod to be removed when placed correct, and lockable guides. Adjustable bolt throw depends on guide placement.

36" x 5/8" Residential Drop Rod

Part No. KSS-58DR36

Qty per Case: 6

Weight: 25 LBS per Case

Made Of: Stainless Steel

Finish: Black, White

Size: 36" x 5/8"



\$25.41 each set for 26 - 50 cases
\$26.75 each set for 10 - 25 cases
\$28.16 each set for 1 - 9 cases
\$34.69 Broken Case Price

Designed to hold heavy double drive gates in place to prevent swaying. All stainless steel components for use with any fence material. 5/8" diameter x 36" long, furnished with hanger that doesn't allow drop rod to be removed when placed correct, and lockable guides. Adjustable bolt throw depends on guide placement.

Latches and Drop Rods



Prices may change without notice.

48" x 5/8" Commercial Drop Rod

Part No. KSS-58DR48

Qty per Case: 6

Weight: 31 LBS per Case

Made Of: Stainless Steel

Finish: Black, White

Size: 48" x 5/8"



\$26.81 each set for 26 - 50 cases
\$28.23 each set for 10 - 25 cases
\$29.71 each set for 1 - 9 cases
\$36.60 Broken Case Price

Designed to hold heavy double drive gates in place to prevent swaying. All stainless steel components for use with any fence material. 5/8" diameter x 48" long, furnished with hanger that doesn't allow drop rod to be removed when placed correct, and lockable guides. Adjustable bolt throw depends on guide placement.

48" x 3/4" Commercial Drop Rod

Part No. KMS-34DR

Qty per Case: 6

Weight: 44 LBS per Case

Made Of: Mild Steel

Finish: Black

Size: 48" x 3/4"



\$24.83 each set for 26 - 50 cases
\$26.14 each set for 10 - 25 cases
\$27.51 each set for 1 - 9 cases
\$33.89 Broken Case Price

Designed to hold heavy double drive gates in place to prevent swaying. Mild steel components for use with wood, steel, and iron gates. 3/4" diameter x 48" long, furnished with hanger that doesn't allow drop rod to be removed when placed correct, and lockable guides. Adjustable bolt throw depends on guide placement.

Comes in Black only.

36" x 1" Heavy Duty Embassy Drop Rods

Part No. KMS-HDEMBDR

Qty per Case: 2

Weight: 28 LBS per Case

Made Of: Mild Steel

Finish: Black

Size: 36" x 1"



\$36.47 each set for 26 - 50 cases
\$38.39 each set for 10 - 25 cases
\$40.41 each set for 1 - 9 cases
\$49.79 Broken Case Price

This is an extremely heavy duty, lockable drop rod for the heaviest gate systems. Mild steel for use on wood, steel, or iron. 1" Diameter x 36" long. Complete with hanger, two guides, coated hex washer head Tek screws (#14 x 1"), and carriage bolts for mounting.

30" x 1" Galvanized Embassy Drop Rods

Part No. KMS-HDEMBDRG

Qty per Case: 2

Weight: 29 LBS per Case

Made Of: Mild Steel

Finish: Galvanized

Size: 30" x 1"



\$26.79 each set for 26 - 50 cases
\$28.20 each set for 10 - 25 cases
\$29.68 each set for 1 - 9 cases
\$36.56 Broken Case Price

This is an extremely heavy duty, tubular, lockable, galvanized drop rod for the heaviest gate systems (commercial and industrial jobs, including dumpster enclosures). The 30" x 1" galvanized drop rod comes with a hanger, two guides, and small Super-Tek self drilling screws.

Latches and Drop Rods

Prices may change without notice.

12" x 5/8" SS Drop Rods (Non-Painted)

Part No. KSS-58DRMMC12

Qty per Case: 6

Weight: 11 LBS per Case

Made Of: Stainless Steel

Finish: Stainless

Size: 12" x 5/8"



\$17.44 each set for 26 - 50 cases
\$18.36 each set for 10 - 25 cases
\$19.33 each set for 1 - 9 cases
\$23.81 Broken Case Price

Cane bolt style drop rod is made of stainless steel and non-handed, for use on left or right. 5/8" diameter, furnished with hanger, guides and flat strike. Adjustable bolt throw depends on guide placement.

18" x 5/8" SS Drop Rods (Non-Painted)

Part No. KSS-58DRMMC18

Qty per Case: 6

Weight: 13 LBS per Case

Made Of: Stainless Steel

Finish: Stainless

Size: 18" x 5/8"



\$20.19 each set for 26 - 50 cases
\$21.25 each set for 10 - 25 cases
\$22.37 each set for 1 - 9 cases
\$27.55 Broken Case Price

Cane bolt style drop rod is made of stainless steel and non-handed, for use on left or right. 5/8" diameter, furnished with hanger, guides and flat strike. Adjustable bolt throw depends on guide placement.

24" x 5/8" SS Drop Rods (Non-Painted)

Part No. KSS-58DRMMC24

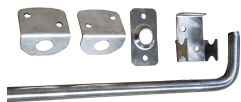
Qty per Case: 6

Weight: 15 LBS per Case

Made Of: Stainless Steel

Finish: Stainless

Size: 24" x 5/8"



\$22.94 each set for 26 - 50 cases
\$24.15 each set for 10 - 25 cases
\$25.42 each set for 1 - 9 cases
\$31.32 Broken Case Price

Cane bolt style drop rod is made of stainless steel and non-handed, for use on left or right. 5/8" diameter, furnished with hanger, guides and flat strike. Adjustable bolt throw depends on guide placement.

Gate Stop

Part No. KSS-STOP

Qty per Case: 12

Weight: 5 LBS per Case

Made Of: Stainless Steel

Finish: Black, White

Size: 4"



\$8.11 each set for 26 - 50 cases
\$8.54 each set for 10 - 25 cases
\$8.99 each set for 1 - 9 cases
\$11.08 Broken Case Price

Gate Stop is made with stainless steel for use on vinyl, wood, or ornamental fence to prevent the #1 cause of hinge failure. No more gates going the wrong way through the opening! Available in black or white.

Latches and Drop Rods



Prices may change without notice.

6" Embassy Gate Stop



Part No. KMS-GSB-6

Qty per Case: 4

Weight: 12 LBS per Case

Made Of: Mild Steel

Finish: Black

Size: 6"

\$31.14 each for 26 - 50 cases
\$32.78 each for 10 - 25 cases
\$34.51 each for 1 - 9 cases
\$42.51 Broken Case Price

To prevent hinge failure caused by a gate that is pushed "into the opening", the 6" Gate Stop provides a strong, secure means to provide a bump stop on the leading edge of your gate. Made with mild steel. Designed to be strong enough for heavy railroad passenger traffic. Integrated molded bumpers help prevent damage.

90 Degree Embassy Gate Stop



Part No. KMS-GSB-90

Qty per Case: 4

Weight: 10 LBS per Case

Made Of: Mild Steel

Finish: Black

Size: 4 7/8"

\$33.20 each for 26 - 50 cases
\$34.95 each for 10 - 25 cases
\$36.79 each for 1 - 9 cases
\$45.32 Broken Case Price

This stop is designed to attach to your gate post and prevent your gate from "hyper-extending" your hinge. Hydraulic self-closing hinges like the D & D Sure Close break when opened too far. This heavy duty stop is designed for high traffic areas to prevent that. Integrated molded bumpers help prevent damage. Made with mild steel.

Bolt-On Quick Exit Key Access - Right Hand



Part No. GM-SBQEKL01

Qty per Case: 1

Weight: LBS per Case

Made Of: Engineered Materials

Finish: Black

**Size: 1/2" - 1-1/4" gate frames,
right hand**

\$109.31 each for 26 - 50 cases
\$115.07 each for 10 - 25 cases
\$121.12 each for 2 - 9 cases
\$149.21 Broken Case Price

Quick exit gate lock, keyed access to fit 1/2" - 1 1/4" gate frames, right hand. This quick exit gate lock is designed to allow rapid exits through gates. Designed for metal gates, the unit is simple to install. The unit automatically latches shut when the gate is closed. Supplied with bolt guide plate and gate post strike plate. Latchbolt is adjustable in length.

Bolt-On Quick Exit Key Access - Left Hand



Part No. GM-SBQEKL01

Qty per Case: 1

Weight: LBS per Case

Made Of: Engineered Materials

Finish: Black

**Size: 1/2" - 1-1/4" gate frames,
left hand**

\$109.31 each set for 26 - 50 cases
\$115.07 each set for 10 - 25 cases
\$121.12 each set for 2 - 9 cases
\$149.21 Broken Case Price

Quick exit gate lock, keyed access to fit 1/2" - 1 1/4" gate frames, left hand. This quick exit gate lock is designed to allow rapid exits through gates. Designed specifically for metal gates. The unit will automatically latch shut when the gate is closed. Stainless steel 16mm latchbolt which springs 22mm into the gate post. Supplied with bolt guide plate and gate post strike plate.

Latches and Drop Rods

Prices may change without notice.

Bolt-On Quick Exit Key Access - Right Hand

Part No. GM-SBQEKL02

Qty per Case: 1

Weight: 1 LBS per Case

Made Of: Engineered Materials

Finish: Black

Size: 1-1/2" - 2-1/4" gate frames, right hand



\$109.31 each set for 26 - 50 cases
\$115.07 each set for 10 - 25 cases
\$121.12 each set for 2 - 9 cases
\$149.21 Broken Case Price

Quick exit gate lock, keyed access to fit 1-1/2" - 2 1/4" gate frames, left hand. This quick exit gate lock is designed to allow rapid exits through gates. Designed specifically for metal gates, the unit is simple to install yet robust. The unit will automatically latch shut when the gate is closed. Stainless steel 16mm latchbolt which springs 22mm into the gate post.

Bolt-On Quick Exit Key Access - Left Hand

Part No. GM-SBQEKL02

Qty per Case: 1

Weight: LBS per Case

Made Of: Engineered Materials

Finish: Black

Size: 1-1/2" - 2-1/4" gate frames, left hand



\$109.31 each set for 26 - 50 cases
\$115.07 each set for 10 - 25 cases
\$121.12 each set for 2 - 9 cases
\$149.21 Broken Case Price

Quick exit gate lock, keyed access to fit 1-1/2" - 2 1/4" gate frames, Left hand. This quick exit gate lock is designed to allow rapid exits through gates. Designed specifically for metal gates, the unit is simple to install yet robust. Stainless steel 16mm latchbolt which springs 22mm into the gate post. Supplied with bolt guide plate and gate post strike plate. Latchbolt is adjustable in length for precise fitting on site.

Bolt on deadlock

Part No. GM-SBD1601

Qty per Case: 1

Weight: LBS per Case

Made Of: Engineered Materials

Finish: Black

Size: 1/2" - 1-1/4" gate frames



\$55.24 each set for 26 - 50 cases
\$58.15 each set for 10 - 25 cases
\$61.21 each set for 2 - 9 cases
\$75.41 Broken Case Price

Bolt on Deadlock to fit 1/2" - 1-1/4" gate frames. Deadbolt is adjustable in length for precise fitting, keyed both sides for easy access. GM-SBD1601 for 1/2" - 1-1/4" flat bar or box section gate frames and GM-SBD1602 1-1/2" - 2-1/4" gate frames. Supplied with deadbolt guide plate. The brass bearing plate locates the deadbolt precisely and guarantees a very smooth locking action.

Bolt on deabolt

Part No. GM-SBD1602

Qty per Case: 1

Weight: LBS per Case

Made Of: Engineered Materials

Finish: Black

Size: 1-1/2" - 2-1/4" gate frames



\$55.24 each set for 26 - 50 cases
\$58.15 each set for 10 - 25 cases
\$61.21 each set for 2 - 9 cases
\$75.41 Broken Case Price

Bolt on Deadlock to fit 1-1/2" - 2-1/4" gate frames. Deadbolt is adjustable in length for precise fitting, keyed both sides for easy access. GM-SBD1601 for 1/2" - 1-1/4" flat bar or box section gate frames and GM-SBD1602 1-1/2" - 2-1/4" gate frames. Supplied with deadbolt guide plate. The brass bearing plate locates the deadbolt precisely and guarantees a smooth locking action.

Latches and Drop Rods



Prices may change without notice.

Digital Gate Lock



Part No. GM-DGL01
Qty per Case: 1
Weight: LBS per Case
Made Of: Engineered Materials
Finish: Black
Size: 1/2" to 1 1/4"

\$143.34 each set for 26 - 50 cases
\$150.89 each set for 10 - 25 cases
\$158.83 each set for 2 - 9 cases
\$195.66 Broken Case Price

Double sided digital lock to fit 1/2" - 1-1/4" gate frames. A mechanical marine grade Digital gate lock with many unique features. Easy to install by simply drilling 3 holes in the gate frame and using the fixing bolts supplied. Keypad on both sides or single keypad with rear handle Operation: Auto-latching—close the gate and the latchbolt latches into the gate frame. To open the gate—enter the code and turn the handle.

Digital Gate Lock



Part No. GM-DGL02
Qty per Case: 1
Weight: LBS per Case
Made Of: Engineered Materials
Finish: Black
Size: 40-60 mm gate frame

\$143.34 each set for 26 - 50 cases
\$150.89 each set for 10 - 25 cases
\$158.83 each set for 2 - 9 cases
\$195.66 Broken Case Price

Double sided digital lock to fit 1-1/2"- 2-1/4" gate frames. A mechanical marine grade Digital gate lock with many unique features. Easy to install by simply drilling 3 holes in the gate frame and using the fixing bolts supplied. Keypad on both sides or single keypad with rear handle Operation: Auto-latching—close the gate and the latchbolt latches into the gate frame. To open the gate—enter the code and turn the handle.

Bolt-On Latch Deadlock



Part No. GM-SBLD1602TDH
Qty per Case: 1
Weight: LBS per Case
Made Of: Engineered Materials
Finish: Black
Size: 1-1/2" - 2-1/4" gate frames

\$64.00 each set for 26 - 50 cases
\$67.37 each set for 10 - 25 cases
\$70.91 each set for 2 - 9 cases
\$87.36 Broken Case Price

Professional and stylish gatelock which holds the gate shut. Turn the key to extend the latchbolt 30mm into the gate post for maximum security. Stainless steel latchbolt which springs 13mm into the gate post and then moves to 30mm when the key is turned to deadlock the lock. Latchbolt is adjustable in length for precise fitting on site. Keyed both sides for easy access

Bolt-On Latch Deadlock Traditional Handle



Part No. GM-SBLD1601TDH
Qty per Case: 1
Weight: LBS per Case
Made Of: Engineered Materials
Finish: Black
Size: 1/2" - 1-1/4" gate frames

\$64.00 each set for 26 - 50 cases
\$67.37 each set for 10 - 25 cases
\$70.91 each set for 2 - 9 cases
\$87.36 Broken Case Price

Bolt on Latch deadlock to fit 1/2"-1-1/4" gate frames with traditional handles. Professional and stylish gatelock which holds the gate shut. Turn the key to extend the latchbolt 30mm into the gate post for maximum security. Stainless steel latchbolt which springs 13mm into the gate post and moves to 30mm when the key is turned to deadlock the lock. Latchbolt is adjustable for precise fitting on site.

Latches and Drop Rods

Prices may change without notice.

Bolt-On Latch Deadlock Alloy Handle

Part No. GM-SBLD1601AH

Qty per Case: 1

Weight: LBS per Case

Made Of: Engineered Materials

Finish: Black

Size: 1/2" - 1-1/4" gate frames



\$64.00 each set for 26 - 50 cases
\$67.37 each set for 10 - 25 cases
\$70.91 each set for 2 - 9 cases
\$87.36 Broken Case Price

Professional and stylish gatelock which holds the gate shut. Turn the key to extend the latchbolt 30mm into the gate post for maximum security. Stainless steel latchbolt which springs 13mm into the gate post and then moves to 30mm when the key is turned to deadlock the lock. Latchbolt is adjustable in length for precise fitting on site. Keyed both sides for easy access

Bolt-On Latch Deadlock with Alloy Handle

Part No. GM-SBLD1602AH

Qty per Case: 1

Weight: LBS per Case

Made Of: Engineered Materials

Finish: Black

Size: 1-1/2" - 2-1/4" gate frames



\$64.00 each set for 26 - 50 cases
\$67.37 each set for 10 - 25 cases
\$70.91 each set for 2 - 9 cases
\$87.36 Broken Case Price

Professional and stylish gatelock which holds the gate shut. The latchbolt 30mm into the gate post for maximum security. Stainless steel latchbolt which springs 13mm into the gate post and moves to 30mm when the key is turned to deadlock the lock. Latchbolt is adjustable for precise fitting on site. Keyed both sides. Available in 2 sizes; 01 for 10-30mm flat bar or box section frames and 02 for 40-60mm frames.



MFT Chart - A



Distance Between Hinges =

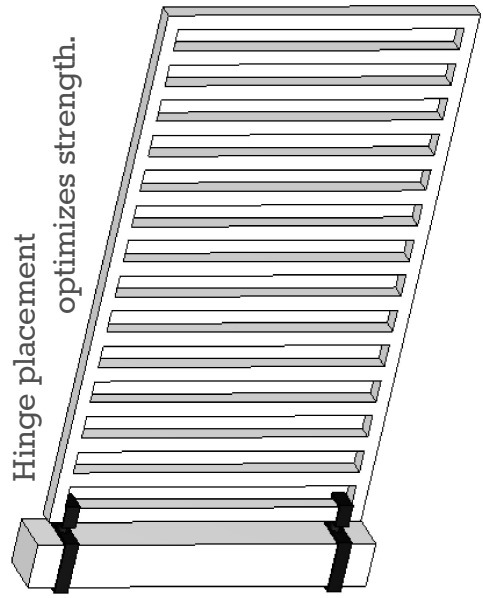


Width of Gate =



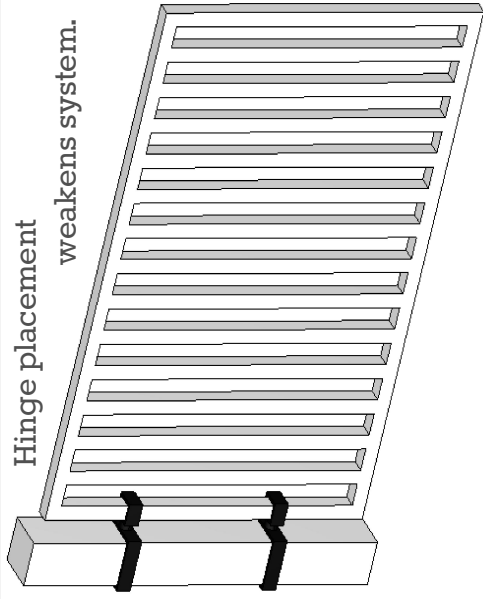
Suggested Maximum Weight = Gray

	3'	3' '6"	4'	4' 6"	5'	5' 6"	6'	6' 6"	7'	7' 6"	8'	8' 6"
3'	120	103	90	80	72	65	60	55	51	48	45	42
3' '6"	144	120	105	93	84	76	70	64	60	56	52	49
4'	160	137	120	107	96	87	80	74	68	64	60	56
4' 6"	179	154	135	120	108	98	90	83	77	72	67	63
5'	200	172	150	133	120	109	100	92	86	80	75	70
5' 6"	220	189	165	146	132	120	110	101	94	88	82	78
6'	239	205	180	160	144	131	120	111	102	96	90	85
6' 6"	259	222	195	174	165	142	130	120	111	104	96	92
7'	279	240	210	186	167	153	140	129	120	112	105	99
7' 6"	300	257	225	200	180	164	150	138	129	120	112	106
8'	320	275	240	214	192	175	160	148	137	128	120	113
8' 6"	340	291	255	226	204	186	170	157	146	136	127	120



For best results, place hinges as close to top and bottom of gate as possible.

This chart is **ONLY** for products manufactured by Modern Fence Technologies and will not be correct with any other products.





MFT Chart - B



Distance Between Hinges =

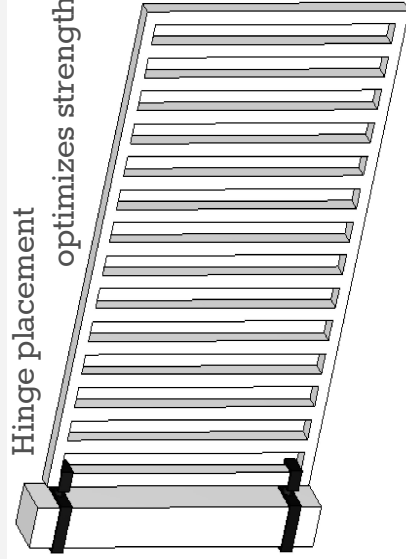


Width of Gate =

Suggested Maximum Weight = Gray

	3'	3' '6"	4'	4' '6"	5'	5' '6"	6'	6' '6"	7'	7' '6"	8'	8' '6"	9'
3'	240	206	180	160	144	131	120	110	103	96	90	84	80
3' '6"	280	240	210	187	168	153	140	129	120	112	105	99	93
4'	320	274	240	213	192	174	160	147	137	128	120	113	106
4' '6"	360	309	270	240	216	196	180	166	154	144	135	127	120
5'	400	343	300	267	240	218	200	184	171	160	150	141	133
5' '6"	440	375	330	293	264	240	220	203	188	176	165	155	146
6'	479	412	360	320	290	262	240	221	206	192	180	169	160
6' '6"	520	446	390	347	312	284	260	240	223	208	196	183	173
7'	558	480	420	374	336	305	280	258	240	224	210	198	187
7' '6"	600	514	450	400	360	327	300	227	257	240	225	212	200
8'	640	548	480	426	384	349	320	295	274	256	240	226	213
8' '6"	680	584	510	453	408	371	340	314	291	272	255	240	227

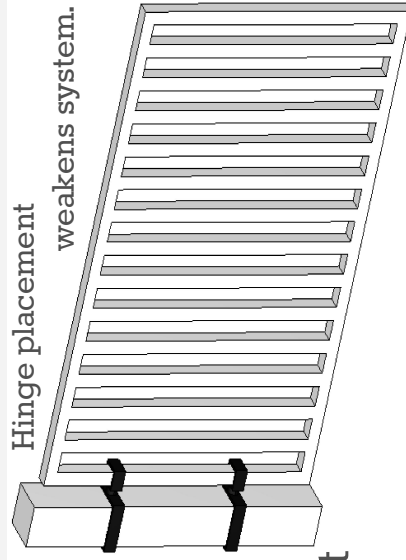
Hinge placement optimizes strength.



For best results, place hinges as close to top and bottom of gate as possible.

This chart is **ONLY** for products manufactured by Modern Fence Technologies and will not be correct with any other products.

Hinge placement weakens system.





MFT Chart - C



Distance Between Hinges =



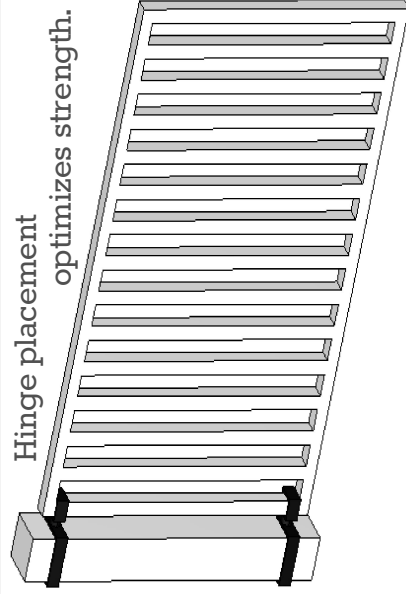
Width of Gate =



Suggested Maximum Weight = Gray

	3'	3' 6"	4'	4' 6"	5'	5' 6"	6'	6' 6"	7'	7' 6"	8'	8' 6"	9'	9' 6"	10'
3'	420	360	315	280	252	229	210	194	180	168	157	148	140	132	126
3' 6"	490	420	367	327	294	267	245	226	210	196	183	173	163	154	147
4'	560	480	420	372	335	305	280	258	240	224	210	197	186	177	168
4' 6"	630	540	472	420	378	344	315	291	270	252	236	222	210	199	189
5'	700	600	525	466	420	381	349	322	300	280	262	247	233	221	210
5' 6"	770	660	578	512	462	420	385	355	330	308	288	272	256	243	231
6'	840	720	630	560	504	458	420	388	360	335	315	296	280	265	252
6' 6"	910	780	682	606	546	496	455	420	390	364	341	321	303	287	273
7'	980	840	735	654	588	535	490	452	420	392	267	345	326	309	294
7' 6"	1050	900	788	700	630	573	525	485	450	420	394	371	350	331	315
8'	1119	961	840	746	672	611	560	517	480	448	420	395	373	354	336

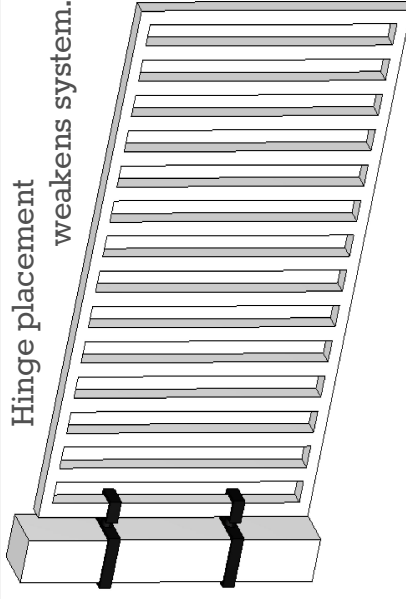
Hinge placement optimizes strength.



For best results, place hinges as close to top and bottom of gate as possible.

This chart is ONLY for products manufactured by Modern Fence Technologies and will not be correct with any other products.

Hinge placement weakens system.





MFT Chart - C

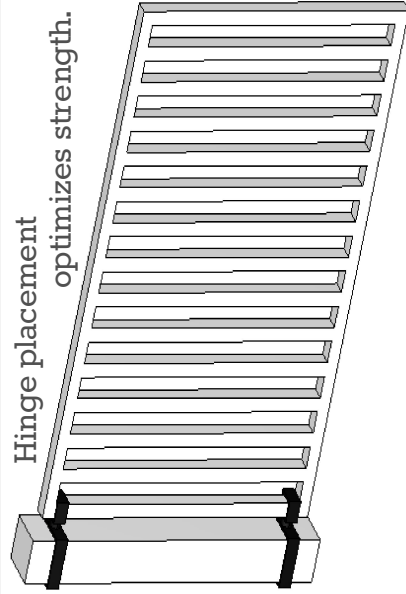


Distance Between Hinges = 

Width of Gate = 

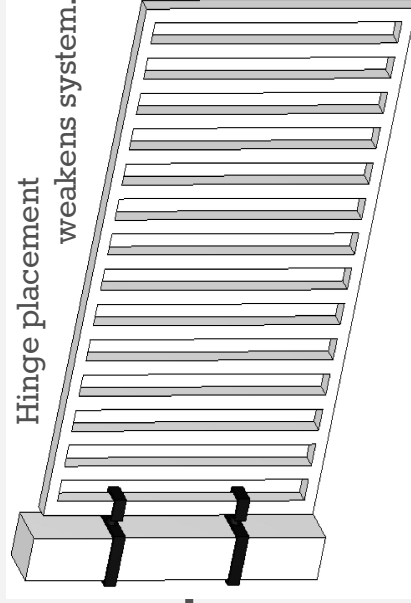
Suggested Maximum Weight = Gray

8' 6"	1190	1020	892	794	714	649	595	549	510	476	446	420	397	376	357
9'	1260	1080	945	840	756	688	630	582	540	504	472	445	420	398	378
9' 6"	1330	1140	998	887	798	725	665	614	570	532	499	469	443	420	399
10'	1400	1200	1050	934	840	764	700	646	600	560	525	494	467	442	420



For best results, place hinges as close to top and bottom of gate as possible.

This chart is ONLY for products manufactured by Modern Fence Technologies and will not be correct with any other products.





MFT Chart - D



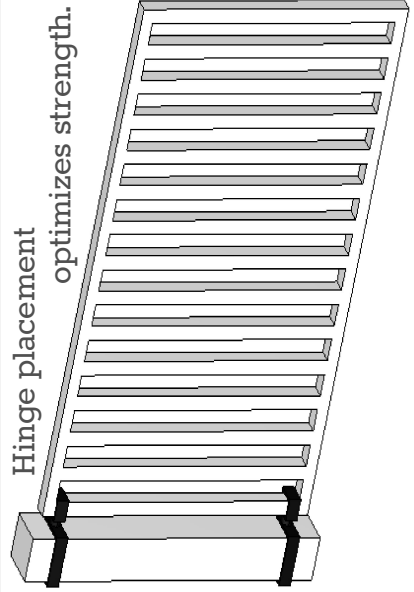
Distance Between Hinges = 

Width of Gate = 

Suggested Maximum Weight = Gray

	3'	3' 6"	4'	4' 6"	5'	5' 6"	6'	6' 6"	7'	7' 6"	8'	8' 6"	9'	9' 6"	10'
3'	2000	1714	1500	1333	1200	1090	1000	923	857	800	750	706	667	632	600
3' 6"	2333	2000	1750	1555	1400	1272	1166	1077	1000	933	875	823	777	736	700
4'	2666	2285	2000	1775	1600	1454	1333	1230	1142	1066	1000	940	888	842	800
4' 6"	3000	2570	2250	2000	1800	1635	1500	1384	1285	1200	1125	1058	1000	946	900
5'	3333	2855	2500	2222	2000	1816	1666	1535	1428	1333	1250	1176	1111	1052	1000
5' 6"	3665	3140	2750	2445	2198	2000	1833	1692	1570	1466	1375	1294	1222	1158	1100
6'	4000	3428	2998	2665	2400	2182	2000	1845	1714	1600	1500	1412	1332	1262	1200
6' 6"	4333	3715	3248	2886	2600	2364	2165	2000	1855	1731	1625	1528	1444	1368	1300
7'	4660	4000	3495	3110	2800	2545	2332	2154	2000	1865	1748	1645	1555	1472	1400
7' 6"	5000	4280	3750	3332	2995	2725	2500	2305	2140	2000	1870	1765	1666	1578	1500
8'	5320	4555	4000	3550	3200	2900	2660	2455	2285	2130	2000	1880	1775	1680	1600
8' 6"	5665	4858	4250	3777	3400	3090	2830	2615	2428	2265	2125	2000	1888	1788	1700

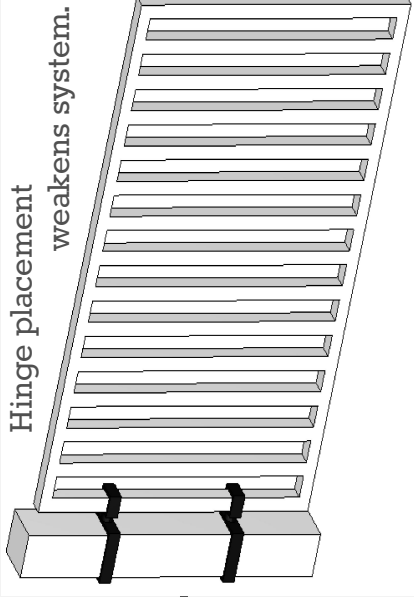
Hinge placement optimizes strength.



For best results, place hinges as close to top and bottom of gate as possible.

This chart is ONLY for products manufactured by Modern Fence Technologies and will not be correct with any other products.

Hinge placement weakens system.



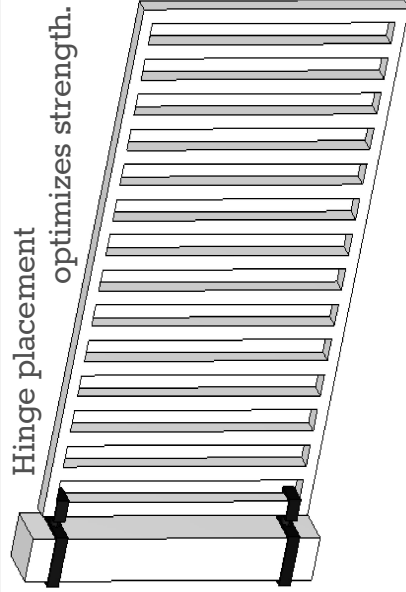


MFT Chart - D



Distance Between Hinges =  Width of Gate =  Suggested Maximum Weight = Gray

9'	6000	5140	4500	4000	3600	3270	3000	2768	2570	2400	2250	2115	2000	1895	1800
9' 6"	6330	5415	4750	4220	3800	3450	3165	2920	2710	2530	2375	2235	2110	2000	1900
10'	6665	5710	4995	4440	4000	3630	3330	3070	2855	2665	2500	2350	2220	2105	2000



For best results, place hinges as close to top and bottom of gate as possible.
 This chart is **ONLY** for products manufactured by Modern Fence Technologies and will not be correct with any other products.

